



**TARAY**  
INTERNATIONAL  
C O R P O R A T I O N



**CURING BLADDER  
SPECIFICATION  
CATALOG  
2007**



Taray International Corporation is a global supplier serving the tire and retread industries worldwide since 1979.

We currently supply industry leading products to customers around the globe. Taray International Corporation has partnered with several manufacturing facilities around the world to provide our customers with private labeled and Taray International branded machinery, tire service equipment and tools.

Taray International provides it's customers with the highest level of service, and supplies the finest equipment and materials known to the industry.

Taray International Corporation specializes in offering turn-key retread plant design which provides our customers with everything they will need from raw materials and supplies to installation, training and service.

From spare parts to state-of-the-art machinery, our approach is diversified and our product resources unlimited.

## **BLADDER SALES & ENGINEERING**

Taray International Corporation carries a wide selection of tire curing and assembly machine bladders.

For information on our bladder lines, please contact our office and speak to one of our sales representatives.

Taray International Corporation staffs a bladder engineering expert to help in product design and application selection.

Taray International Corporation also carries a wide selection of O.T.R. curing bladders specifically designed for your giant tire applications.

## TABLE OF CONTENTS

<b>CONVENTIONAL WALL CURING BLADDERS - MCNEIL / BOM</b>			
Industrial / Small Farm / Passenger	4" - 15"		6
Passenger / Light Truck	14" - 16.1"		7
Large Truck	20" - 24.5"		11
Large Truck / Rear Farm	24" - 46"		12-15
<b>TOROIDAL CURING BLADDERS - AUTOLOK / KRUPP / BOM</b>			
Non-Symmetrical Passenger	12" - 13"		24
Autelok Passenger / Light Truck	12" - 14"		25
Autelok Non-Symmetrical Large Truck	20" - 24.5"		26
Krupp Non-Symmetrical Passenger / Light Truck	15" - 16"		27
BOM Thin Wall Passenger / Light Truck	12" - 16.5"		28
<b>CLOSED END CURING BLADDERS - NRM</b>			
Conventional Wall Passenger / Light Truck	13" - 15"		31
Conventional Wall Passenger / Light Truck	13" - 16"		32
Conventional Wall Large Truck	20" - 24"		33
Conventional Wall Passenger / Light Truck	12" - 15"		34-37
Conventional Wall Large Truck	20"		38
Conventional Wall Light Truck	13" - 15"		39
<b>BLADDER ETCHING &amp; VENTING</b>			19
<b>BLADDER PACKAGING</b>			22-23
<b>PACKAGING SPECIFICATIONS</b>			20-21
<b>SPECIAL ORDER ITEMS</b>			21



## CURING BLADDERS

One of the industry's largest and most modern facilities dedicated to producing tire curing bladders and other quality engineered rubber products for distribution to a world wide market.

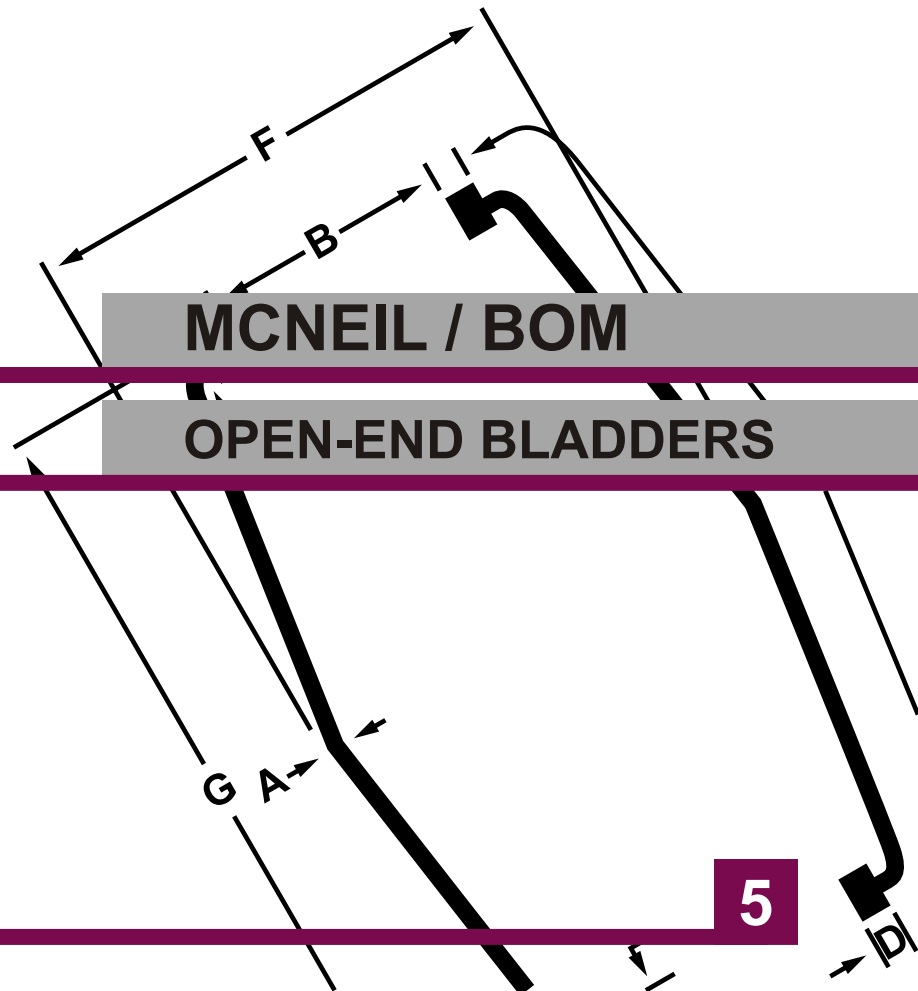
We continues to be an industry leader utilizing the latest technology to analyze applications and develop the best bladder geometry for new tire and retread tire curing systems. Diligent on-site rubber compounding and laboratory facilities ensure greater material consistency, optimum cure cycles and product reliability. Automatic buffing and runout technology decrease tire defects and create a more durable product.



# TARAY

INTERNATIONAL

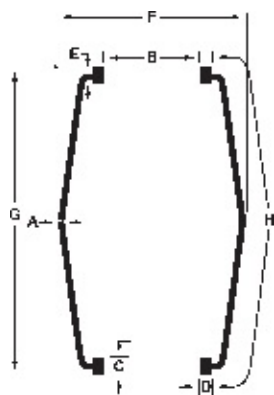
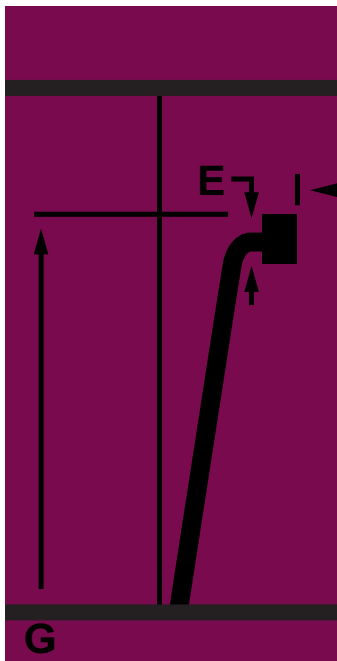
C O R P O R A T I O N



MCNEIL / BOM

OPEN-END BLADDERS

# TARAY INTERNATIONAL CORPORATION

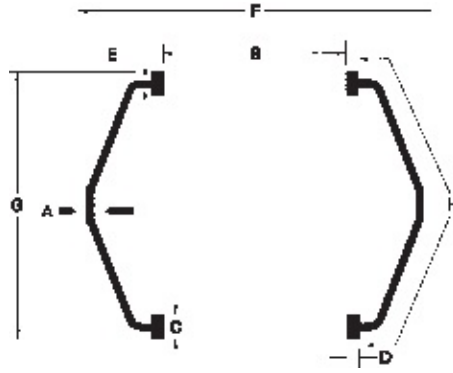
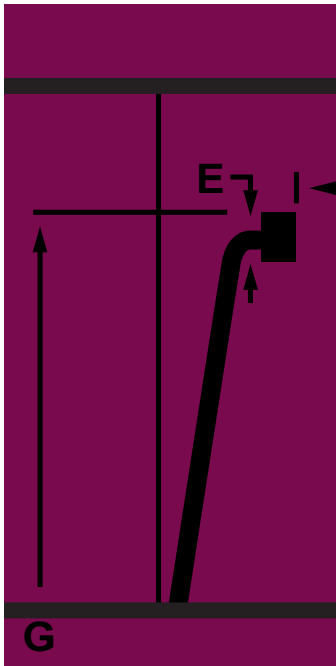


Industrial / Small Farm / Passenger

Bladder Code	Reference Size (mm)	Crown Gauge A (mm)	Foot I.D. B (mm)	Foot Height C (mm)	Foot Width D (mm)	Neck Gauge E (mm)	Outside Diameter F (mm)	Overall Height G (mm)	Effective Periphery H (mm)	Wt. Lbs. (Kilos)	Etch Page 19
7374	4" (mm)	0.30 7.6	2.50 63.5	0.50 12.7	0.18 (2) 4.6	0.28 7.1	5.00 127.0	7.94 201.7	8.44 214.4	1.25 0.57	4
7375	5" (mm)	0.30 7.6	2.50 63.5	0.50 12.7	0.18 (2) 4.6	0.28 7.1	5.00 127.0	8.94 227.1	9.44 239.8	1.50 0.68	4
4789	6" small (mm)	0.30 7.6	3.75 95.3	0.58 14.7	0.31 7.9	0.26 6.6	6.54 166.1	8.44 214.4	9.12 231.6	1.90 0.86	5
4171	8" small (mm)	0.33 8.4	4.63 117.6	0.66 16.8	0.44 11.2	0.31 7.9	8.50 215.9	10.25 260.4	11.18 284.0	3.00 1.36	1
4173	8" medium (mm)	0.33 8.4	4.63 117.6	0.66 16.8	0.44 11.2	0.31 7.9	8.50 215.9	13.10 332.7	14.00 355.6	4.20 1.90	1
8188	8" large (mm)	0.37 9.4	4.63 117.6	0.66 16.8	0.44 11.2	0.31 7.9	8.50 215.9	17.48 444.0	18.38 466.9	5.70 2.59	1
8189	8" X-large (mm)	0.37 9.4	4.63 117.6	0.66 16.8	0.44 11.2	0.31 7.9	8.50 215.9	19.48 494.8	20.38 517.7	6.40 2.90	1
5339	9"/10" (mm)	.33/.28 8.4	5.50 139.7	0.88 22.4	0.50 12.7	0.38 9.7	9.50 241.3	15.00 381.0	15.72 399.3	5.90 2.68	1
7370	10" (mm)	0.30 7.6	6.25 158.8	0.82 20.8	0.46 11.7	0.38 9.7	11.50 292.1	15.71 399.0	16.50 419.1	7.20 3.27	1
2196	10" (1) (mm)	0.48 12.2	6.92 175.8	0.84 21.3	0.50 12.7	0.41 10.4	11.38 289.1	18.38 466.9	18.9 480.1	10.80 4.90	11
4776	12" (mm)	0.39 9.9	8.00 203.2	0.82 20.8	0.50 12.7	0.38 9.7	11.88 301.8	12.25 311.2	13.40 340.4	8.00 3.63	1
6299	13"-15" X-small (mm)	0.33 8.4	8.60 218.4	0.82 20.8	0.50 12.7	0.38 9.7	12.98 329.7	13.28 337.3	14.12 358.6	7.70 3.49	1
6228	13"-15" X-small (mm)	0.33 8.4	8.60 218.4	0.82 20.8	0.50 12.7	0.38 9.7	15.20 386.1	13.64 346.5	16.14 410.0	9.80 4.44	1
7632	13"-15" X-large (mm)	0.33 8.4	8.60 218.4	0.82 20.8	0.50 12.7	0.38 9.7	15.20 386.1	16.06 407.9	18.64 473.5	10.90 4.95	1

(1) "L" Type Foot Configuration  
(2) 30° Tapered Toe Angle

# TARAY INTERNATIONAL CORPORATION

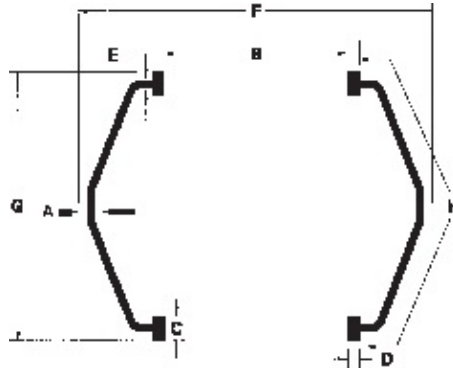
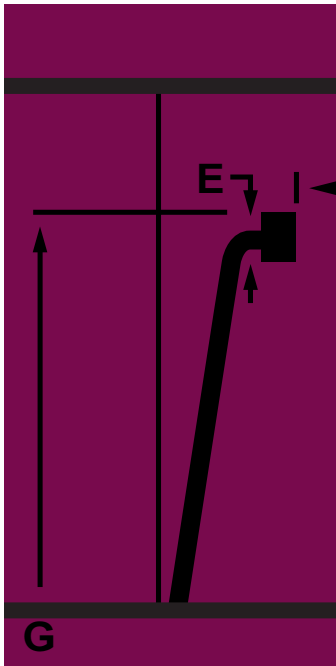


## Passenger / Light Truck

G

Bladder Code	Reference Size (mm)	Crown Gauge A (mm)	Foot I.D. B (mm)	Foot Height C (mm)	Foot Width D (mm)	Neck Gauge E (mm)	Outside Diameter F (mm)	Overall Height G (mm)	Effective Periphery H (mm)	Wt. Lbs. (Kilos)	Etch Page 19
1209	9" X 310 (mm)	0.27 6.9	8.84 224.5	0.84 21.4	0.57 14.5	16.54 420.1	12.20 310.0			7.3 3.3	
11457	9" X 310 (mm)	0.27 6.9	8.84 224.5	0.84 21.4	0.57 14.5	16.54 420.1	15.08 383.0			7.9 3.6	
11252	9" X 330 (mm)	0.3 6.90	8.8 224.50	0.8 21.40	0.6 14.50	16.5 420.1	13.0 330.00			7.6 3.45	
11210	10" X 330 (mm)	0.36 9.1	9.84 249.9	0.84 21.4	0.57 14.5	16.54 420.1	12.99 330.0			10.4 4.7	
11211	10" X 350 (mm)	0.36 9.10	9.84 249.90	0.84 21.40	0.57 14.50	16.54 420.1	13.78 350.00			11 4.99	
11213	10" X 370 (mm)	0.4 9.10	9.8 249.90	0.8 21.40	0.6 14.50	16.5 420.10	14.6 370.00			11.5 5.22	
11212	10" X 390 (mm)	0.4 9.10	9.8 249.90	0.8 21.40	0.6 14.50	16.5 420.1	15.4 390.00			12.1 5.49	
11236	10" X 410 (mm)	0.36 9.1	9.84 249.9	0.84 21.4	0.57 14.5	16.54 420.1	16.14 410.0			12.6 5.7	
11237	11" X 390 (mm)	0.27 6.9	10.84 275.3	0.84 21.4	0.57 14.5	16.54 420.1	15.35 390.0			11 5.0	
11238	11" X 410 (mm)	0.27 6.9	10.84 275.3	0.84 21.4	0.57 14.5	16.54 420.1	16.14 410.0			11.4 5.2	
11239	11" X 435 (mm)	0.27 6.9	10.84 275.3	0.84 21.4	0.57 14.5	16.54 420.1	17.13 435.0			12.1 5.5	
11240	15" X 455 (mm)	0.27 6.90	14.84 376.90	0.84 21.40	0.57 14.50	16.54 420.1	17.91 455.00			24.5 11.11	
11241	15" X 475 (mm)	0.3 6.90	14.8 376.90	0.8 21.40	0.6 14.50	16.5 420.1	18.7 475.00			25.6 11.61	
11242	15" X 535 (mm)	0.3 6.90	14.8 376.90	0.8 21.40	0.6 14.50	16.5 420.10	21.1 535.00			28.3 12.83	
11243	15" X 600 (mm)	0.27 6.9	14.84 376.9	0.84 21.4	0.57 14.5	16.54 420.1	23.62 600.0			31.2 14.2	
11244	15" X 670 (mm)	0.27 6.9	14.84 376.9	0.84 21.4	0.57 14.5	16.54 420.1	26.38 670.0			34.4 15.6	
11456	19" X 383 (mm)	0.4 9.10	18.8 478.50	0.8 21.40	0.6 14.50	16.5 420.10	15.1 383.00			43.6 19.77	
11245	19" X 620 (mm)	0.36 9.10	18.84 478.50	0.84 21.40	0.57 14.50	16.54 420.1	24.41 620.00			59 26.76	

# TARAY INTERNATIONAL CORPORATION

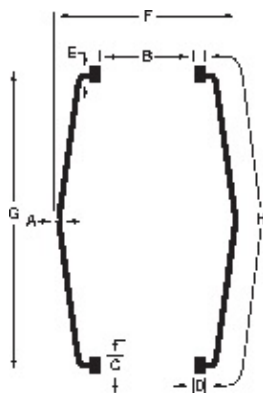
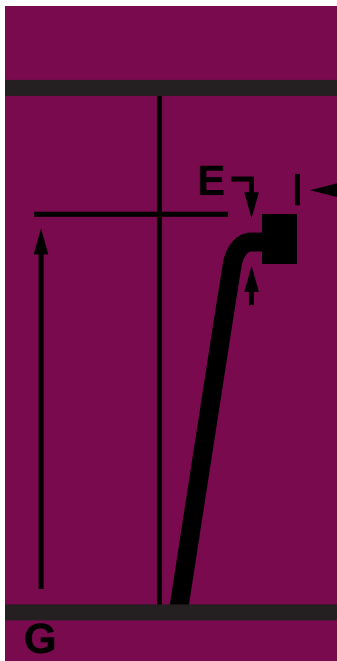


Light Truck

Bladder Code	Reference Size (mm)	Crown Gauge A (mm)	Foot I.D. B (mm)	Foot Height C (mm)	Foot Width D (mm)	Neck Gauge E (mm)	Outside Diameter F (mm)	Overall Height G (mm)	Effective Periphery H (mm)	Wt. Lbs. (Kilos)	Etch Page 19
11262	12.5" X 295 X 570 (mm)	0.24 6.0	11.42 290.0	0.91 23.0	0.31 8.0	0.31 8.0	22.44 570.0	11.61 295.0		10.90 4.95	
11484	12.5" X 320 X 570 (mm)	0.24 6.0	11.42 290.0	0.91 23.0	0.31 8.0	0.31 8.0	22.4 570.0	12.59 320.0		10.4 4.72	
11263	12.5" X 335 X 570 (mm)	0.24 6.0	11.42 290.0	0.91 23.0	0.31 8.0	0.31 8.0	22.44 570.0	13.19 335.0		11.20 5.08	
11264	12.5" X 385 X 570 (mm)	0.24 6.0	11.42 290.0	0.91 23.0	0.31 8.0	0.31 8.0	22.44 570.0	15.16 385.0		12.50 5.68	
11265	12.5" X 405 X 570 (mm)	0.24 6.0	11.42 290.0	0.91 23.0	0.31 8.0	0.31 8.0	22.44 570.0	15.94 405.0		13.80 6.26	
11266	12.5" X 445 X 570 (mm)	0.24 6.0	11.42 290.0	0.91 23.0	0.31 8.0	0.31 8.0	22.44 570.0	17.52 445.0		14.90 6.76	
11308	14" X 340 X 610 (mm)	0.24 6.0	13.78 350.0	0.98 25.0	0.39 10.0	0.31 8.0	24.02 610.0	13.39 340.0		12.40 5.64	
11309	14" X 370 X 610 (mm)	0.24 6.0	13.78 350.0	0.98 25.0	0.39 10.0	0.31 8.0	24.02 610.0	14.57 370.0		13.30 6.05	
11310	14" X 400 X 610 (mm)	0.24 6.0	13.78 350.0	0.98 25.0	0.39 10.0	0.31 8.0	24.02 610.0	15.75 400.0		14.10 6.40	
11311	14" X 460 X 610 (mm)	0.24 6.0	13.78 350.0	0.98 25.0	0.39 10.0	0.31 8.0	24.02 610.0	18.11 460.0		16.00 7.26	



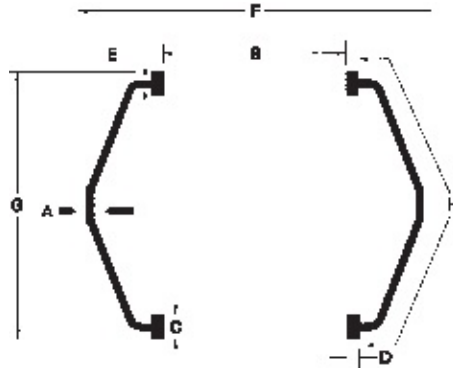
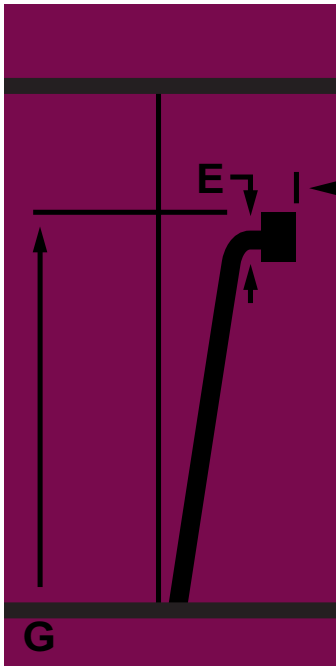
# TARAY INTERNATIONAL CORPORATION



## Passenger / Light Truck

Bladder Code	Reference Size (mm)	Crown Gauge A (mm)	Foot I.D. B (mm)	Foot Height C (mm)	Foot Width D (mm)	Neck Gauge E (mm)	Outside Diameter F (mm)	Overall Height G (mm)	Effective Periphery H (mm)	Wt. Lbs. (Kilos)	Etch Page 19
7864	15" small (mm)	0.25 6.4	8.88 225.6	0.75 19.1	0.50 12.7	0.38 9.7	13.64 346.5	13.78 350.0	15.20 386.1	7.90 3.58	2
7865	15" medium (mm)	0.25 6.4	8.88 225.6	0.75 19.1	0.50 12.7	0.38 9.7	15.17 385.3	16.38 416.1	18.10 459.7	8.29 3.76	6
7866	15" medium (mm)	0.25 6.4	8.88 225.6	0.75 19.1	0.50 12.7	0.38 9.7	15.17 385.3	19.38 492.3	21.13 536.7	10.20 4.64	7
6790	14" small (mm)	0.27 (1) 6.9	9.50 241.3	0.82 20.8	0.50 12.7	0.38 9.7	13.00 330.2	16.41 416.8	17.26 438.4	8.90 4.04	9
6390	14" small (mm)	0.33 8.4	9.75 247.7	0.82 20.8	0.50 12.7	0.38 9.7	15.30 388.6	16.58 421.1	17.96 456.2	11.10 5.05	1
6297	14" medium (mm)	0.33 8.4	9.75 247.7	0.82 20.8	0.50 12.7	0.38 9.7	15.98 405.9	18.28 464.3	19.56 496.8	12.40 5.62	1
6230	15" (mm)	0.33 8.4	10.88 276.4	0.82 20.8	0.50 12.7	0.38 9.7	15.95 405.1	16.89 429.0	18.20 462.3	11.90 5.40	1
6391	15" (mm)	0.33 8.4	10.88 276.4	0.86 21.8	0.50 12.7	0.38 9.7	16.11 409.2	18.25 463.6	19.66 499.4	13.15 5.98	1
2649(2)	15"/16" med.LPT0.48 (mm)	0.48 12.2	10.88 276.4	0.80 20.3	0.50 12.7	0.38 9.7	16.20 411.5	22 558.8	23.40 594.4	19.70 8.93	1
6319	15" small (mm)	0.35 8.9	10.88 276.4	0.86 21.8	0.50 12.7	0.38 9.7	17.50 444.5	18.46 468.9	21.16 537.5	16.20 7.36	2
6320	15" large (mm)	0.35 8.9	10.88 276.4	0.86 21.8	0.50 12.7	0.38 9.7	17.50 444.5	21.96 557.8	24.66 626.4	18.30 8.32	2
6321	15" X-large (mm)	0.44 11.2	10.88 276.4	0.86 21.8	0.50 12.7	0.38 9.7	17.50 444.5	26.21 665.7	29.25 743.0	23.05 10.48	2
9340	18.4-16.1" (mm)	0.43 10.9	12.00 304.8	1.25 31.8	0.50 12.7	0.43 10.9	23.00 584.2	35.16 893.1	37.00 939.8	38.00 17.27	3
9341	21.5L-16.1" (mm)	0.43 10.9	12.00 304.8	1.25 31.8	0.50 12.7	0.43 10.9	23.00 584.2	37.16 943.9	39.00 990.6	39.60 17.96	3

(1) Contoured Core: Minimum Gauge Shown  
 (2) Left Hand Venting

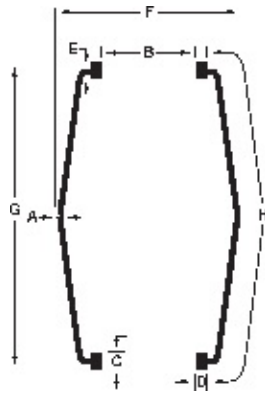
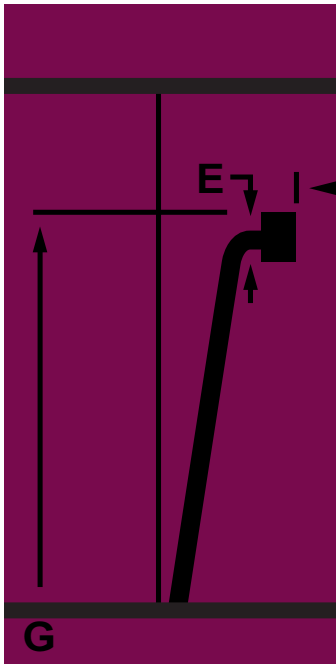


PAGE LEFT BLANK INTENTIONALLY

G

Bladder Code	Reference Size (mm)	Crown Gauge A (mm)	Foot I.D. B (mm)	Foot Height C (mm)	Foot Width D (mm)	Neck Gauge E (mm)	Outside Diameter F (mm)	Overall Height G (mm)	Effective Periphery H (mm)	Wt. Lbs. (Kilos)	Etch Page 19
--------------	---------------------	--------------------	------------------	--------------------	-------------------	-------------------	-------------------------	-----------------------	----------------------------	------------------	--------------

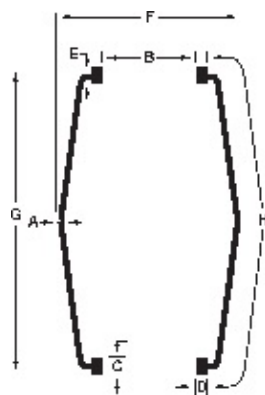
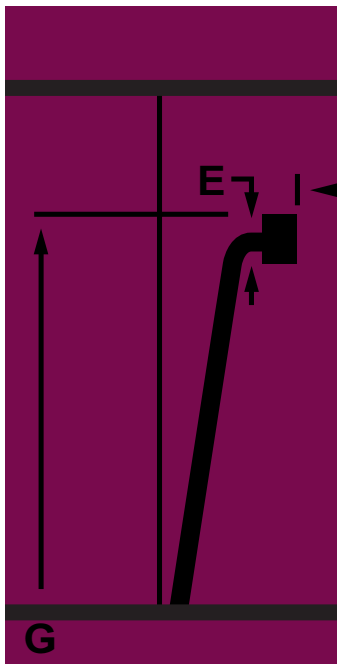
# TARAY INTERNATIONAL CORPORATION



Large Truck

Bladder Code	Reference Size (mm)	Crown Gauge A (mm)	Foot I.D. B (mm)	Foot Height C (mm)	Foot Width D (mm)	Neck Gauge E (mm)	Outside Diameter F (mm)	Overall Height G (mm)	Effective Periphery H (mm)	Wt. Lbs. (Kilos)	Etch Page 19
10927	20"/22"/22.5" (mm)	0.30 7.6	15.00 381.0	1.00 25.4	0.50 12.7	0.46 11.7	22.50 571.5	20.88 530.4	24.20 614.7	26.00 11.79	5
8376	20"/22"/22.5" (mm)	0.44 11.2	15.00 381.0	1.00 25.4	0.50 12.7	0.46 11.7	22.50 571.5	20.88 530.4	24.20 614.7	30.50 13.86	5
3863	20" X-small (mm)	0.44 11.2	15.13 384.3	1.00 25.4	0.50 12.7	0.46 11.7	20.25 514.4	16.00 406.4	17.42 442.5	19.30 8.75	1
10924	20" small (mm)	0.30 7.6	15.13 384.3	1.00 25.4	0.50 12.7	0.46 11.7	20.58 522.7	19.81 503.2	21.10 535.9	19.90 9.02	3
6236	20" small (mm)	0.44 11.2	15.13 384.3	1.00 25.4	0.50 12.7	0.46 11.7	20.58 522.7	19.81 503.2	21.10 535.9	23.40 10.61	3
2636	20" small (mm)	0.48 12.2	15.13 384.3	1.04 26.4	0.50 12.7	0.48 12.2	20.57 522.5	19.77 502.2	21.10 535.9	26.10 11.84	11
10921	20" medium (mm)	0.30 7.6	15.13 384.3	1.00 25.4	0.50 12.7	0.46 11.7	22.13 562.1	24.11 612.4	25.83 656.1	24.50 11.11	2
4735	20" medium (mm)	0.44 11.2	15.13 384.3	1.00 25.4	0.50 12.7	0.46 11.7	22.00 558.8	24.00 609.6	25.83 656.1	28.80 13.06	1
6226	20" medium (mm)	0.44 11.2	15.13 384.3	1.00 25.4	0.50 12.7	0.46 11.7	22.13 562.1	24.11 612.4	25.83 656.1	29.10 13.20	2
10922	20" large (mm)	0.30 7.6	15.00 381.0	1.00 25.4	0.50 12.7	0.46 11.7	23.50 596.9	24.75 628.7	28.10 713.7	28.00 12.70	1
2895	20" large (mm)	0.66 16.8	15.00 381.0	1.00 25.4	0.50 12.7	0.46 11.7	23.50 596.9	24.75 628.7	28.10 713.7	42.50 19.27	1
8177	22"/22.5"/24.5" (mm)	0.44 11.2	15.00 381.0	1.16 29.5	0.50 12.7	0.46 11.7	23.50 596.9	23.38 593.9	26.64 676.7	31.50 14.32	5

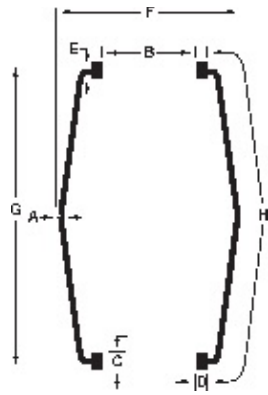
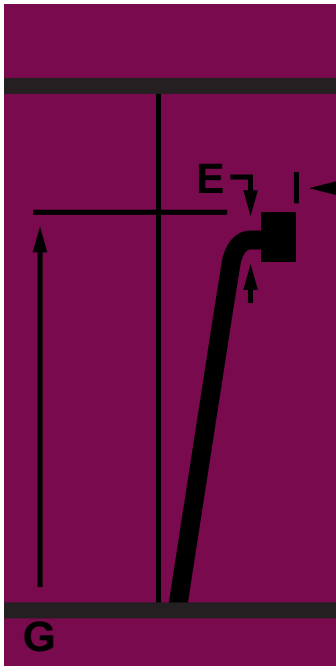
# TARAY INTERNATIONAL CORPORATION



## Large Truck / Rear Farm

Bladder Code	Reference Size (mm)	Crown Gauge A (mm)	Foot I.D. B (mm)	Foot Height C (mm)	Foot Width D (mm)	Neck Gauge E (mm)	Outside Diameter F (mm)	Overall Height G (mm)	Effective Periphery H (mm)	Wt. Lbs. (Kilos)	Etch Page 19
7646	24" small (mm)	0.63 / 16.0	17.50 / 444.5	1.25 / 31.8	0.63 / 16.0	0.63 / 16.0	26.00 / 660.4	17.85 / 453.4	21.94 / 557.3	40.35 / 18.34	3
7647	24" medium (mm)	0.63 / 16.0	17.50 / 444.5	1.25 / 31.8	0.63 / 16.0	0.63 / 16.0	26.00 / 660.4	22.85 / 580.4	26.94 / 684.3	49.50 / 22.50	3
7651	24" large (mm)	0.63 / 16.0	17.50 / 444.5	1.25 / 31.8	0.63 / 16.0	0.63 / 16.0	27.50 / 698.5	29.86 / 758.4	34.00 / 863.6	62.70 / 28.50	4
7652	24" X-large (mm)	0.63 / 16.0	17.50 / 444.5	1.25 / 31.8	0.63 / 16.0	0.63 / 16.0	27.50 / 698.5	33.86 / 860.0	38.00 / 965.2	72.00 / 32.73	5
9373	25" (mm)	0.63 / 16.0	18.38 / 466.9	1.25 / 31.8	0.63 / 16.0	0.63 / 16.0	30.00 / 762.0	41.00 / 1041.4	45.07 / 1144.8	91.00 / 41.27	10
7662	26" (mm)	0.63 / 16.0	21.50 / 546.1	1.25 / 31.8	0.63 / 16.0	0.63 / 16.0	29.75 / 755.7	23.25 / 590.6	27.27 / 692.7	60.30 / 27.35	3
11478	26" (mm)	0.63 / 16.0	23.00 / 584.2	1.25 / 31.8	0.63 / 16.0	0.63 / 16.0	29.75 / 755.7	23.25 / 590.6	27.27 / 692.7	60.30 / 27.35	3
4779	24"-28" (mm)	0.75 / 19.1	21.50 / 546.1	1.25 / 31.8	0.63 / 16.0	0.63 / 16.0	30.00 / 762.0	23.25 / 590.6	27.34 / 694.4	66.10 / 29.98	3
7661	26" (mm)	0.63 / 16.0	21.50 / 546.1	1.25 / 31.8	0.63 / 16.0	0.63 / 16.0	29.75 / 755.7	25.25 / 641.4	29.27 / 743.5	65.00 / 29.55	3
11477	26" (mm)	0.63 / 16.0	23.00 / 584.2	1.25 / 31.8	0.63 / 16.0	0.63 / 16.0	29.75 / 755.7	25.25 / 641.4	29.27 / 743.5	63.00 / 28.64	3
7663	26"-28" (mm)	0.63 / 16.0	21.50 / 546.1	1.25 / 31.8	0.63 / 16.0	0.63 / 16.0	29.75 / 755.7	28.50 / 723.9	32.52 / 826.0	71.10 / 32.32	3
11479	26"-28" (mm)	0.63 / 16.0	23.00 / 584.2	1.25 / 31.8	0.63 / 16.0	0.63 / 16.0	29.75 / 755.7	28.50 / 723.9	32.52 / 826.0	69.50 / 31.59	3
7664	28"-30" (mm)	0.63 / 16.0	21.50 / 546.1	1.25 / 31.8	0.63 / 16.0	0.63 / 16.0	29.75 / 755.7	33.75 / 857.3	37.77 / 959.4	84.00 / 38.10	3
11480	28"-30" (mm)	0.63 / 16.0	23.00 / 584.2	1.25 / 31.8	0.63 / 16.0	0.63 / 16.0	29.75 / 755.7	33.75 / 857.3	37.77 / 959.4	84.00 / 38.10	3
4780	26"-30" (mm)	0.77 / 19.6	21.50 / 546.1	1.25 / 31.8	0.63 / 16.0	0.63 / 16.0	30.04 / 763.0	33.75 / 857.3	37.84 / 961.1	97.00 / 44.09	3
8409	FORMER 386C (mm)	0.75 / 19.1	21.50 / 546.1	1.25 / 31.8	0.63 / 16.0	0.63 / 16.0	31.00 / 787.4	41.00 / 1041.4	44.75 / 1136.7	106.00 / 48.07	3
8358	34"-38" (mm)	0.55 / 14.0	26.75 / 679.5	1.25 / 31.8	0.63 / 16.0	0.63 / 16.0	38.00 / 965.2	33.60 / 853.4	38.80 / 985.5	100.50 / 45.58	3
8359	34"-38" (mm)	0.55 / 14.0	26.75 / 679.5	1.25 / 31.8	0.63 / 16.0	0.63 / 16.0	38.00 / 965.2	41.60 / 1056.6	46.80 / 1188.7	120.00 / 54.42	3
11475	34"-38" (mm)	0.55 / 14.0	25.50 / 647.7	1.50 / 38.1	0.63 / 16.0	0.63 / 16.0	38.00 / 965.2	41.60 / 1056.6	46.80 / 1188.7	120.00 / 54.42	3
4781	36"-38" small (mm)	0.78 / 19.8	29.50 / 749.3	1.25 / 31.8	0.63 / 16.0	0.63 / 16.0	38.06 / 966.7	23.35 / 593.1	27.34 / 694.4	89.00 / 40.45	1

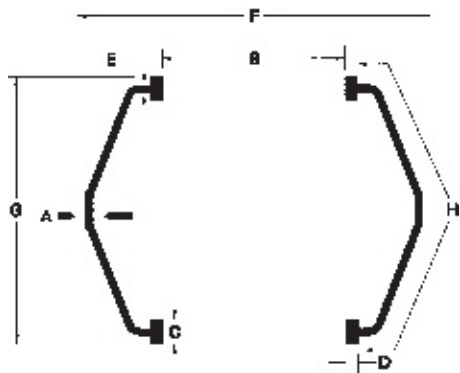
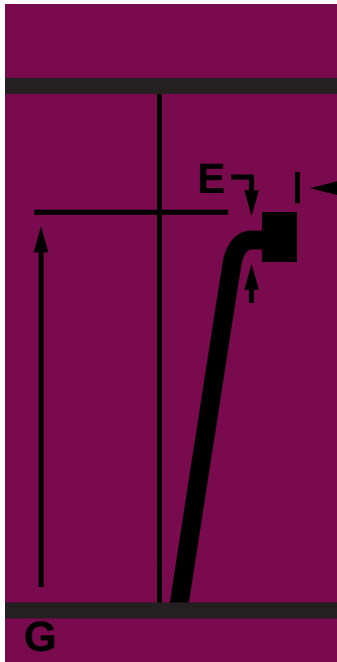
# TARAY INTERNATIONAL CORPORATION



## Large Truck / Rear Farm

Bladder Code	Reference Size (mm)	Crown Gauge A (mm)	Foot I.D. B (mm)	Foot Height C (mm)	Foot Width D (mm)	Neck Gauge E (mm)	Outside Diameter F (mm)	Overall Height G (mm)	Effective Periphery H (mm)	Wt. Lbs. (Kilos)	Etch Page 19
B0045J	15" (mm)	0.35 (8.9)	10.88 (276.4)	0.80 (20.3)	0.50 (12.7)	0.375 (9.5)	16.75 (425.5)	21 (533.4)	23.43 (595.1)	16.40 (7.44)	
B0109N	20" (mm)	0.40 (10.2)	15.13 (384.3)	1.09 (27.7)	0.50 (12.7)	0.59 (15.0)	22.50 (571.5)	22 (558.8)	25.02 (635.5)	29.50 (13.38)	
B08132	15" / 16" (mm)	0.38 (9.7)	11.00 (279.4)	0.80 (20.3)	0.50 (12.7)	0.4 (10.2)	16.75 (425.5)	13.25 (336.6)	15.57 (395.5)	9.00 (4.08)	
B08342	14" / 15" (mm)	0.35 (8.9)	10.75 (273.1)	0.80 (20.3)	0.50 (12.7)	0.37 (9.4)	15.82 (401.8)	18.75 (476.3)	21.11 (536.2)	13.70 (6.23)	
B0923M	20" (mm)	0.40 (10.2)	15.13 (384.3)	1.09 (27.7)	0.50 (12.7)	0.59 (15.0)	22.50 (571.5)	19.63 (498.6)	22.64 (575.1)	25.70 (11.68)	
B00529	(mm)	0.40 (10.2)	21.75 (552.5)	1.02 (25.9)			29.50 (749.3)	29.75 (755.7)	31.25 (793.8)	71.50 (32.50)	
B0924M	(mm)	0.40 (10.2)	15.50 (393.7)	1.05 (26.5)			20.00 (508.0)	24.25 (616.0)	25.75 (654.1)	32.00 (14.51)	
B0944F	(mm)	0.40 (10.2)	17.50 (444.5)	1.05 (26.5)			25.57 (649.5)	27.50 (698.5)	29.75 (755.7)	50.50 (22.90)	

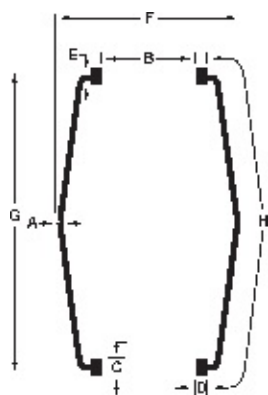
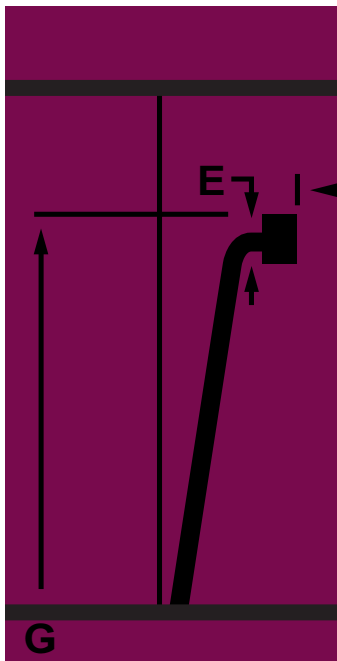
# TARAY INTERNATIONAL CORPORATION



Large Truck / Rear Farm

Bladder Code	Reference Size (mm)	Crown Gauge A (mm)	Foot I.D. B (mm)	Foot Height C (mm)	Foot Width D (mm)	Neck Gauge E (mm)	Outside Diameter F (mm)	Overall Height G (mm)	Effective Periphery H (mm)	Wt. Lbs. (Kilos)	Etch Page 19
11458	19" X 1010 (mm)	0.59 15.0	18.62 472.9	0.87 22.1	0.55 14.0	0.47 11.9	32.28 819.9	39.8 1010.0	42.9 1090.0	97.00 43.99	
11459	19" X 1050 (mm)	0.59 15.0	18.62 472.9	0.87 22.1	0.55 14.0	0.47 11.9	32.28 819.9	41.34 1050.0	44.5 1131.0	105.00 47.62	
11321	19" - 1150 (mm)	0.59 15.0	18.62 472.9	0.87 22.1	0.55 14.0	0.47 11.9	32.28 819.9	45.28 1150.1	48.82 1240.0	112.00 50.79	4
11344	31" X 360 (mm)	0.63 16.0	31.02 787.9	0.87 22.1	0.55 14.0	0.47 11.9	39.07 1005.1	14.17 360.0	29.77 756.4	45.98 20.90	
11454	31" X 500 (mm)	0.63 16.0	31.02 787.9	0.87 22.1	0.55 14.0	0.47 11.9	39.57 1005.1	19.69 500.0	41.38 1051.1	63.90 28.98	
11322	31" - 550 (mm)	0.63 16.0	31.02 787.9	0.87 22.1	0.55 14.0	0.47 11.9	39.57 1005.1	21.54 547.1	23.47 596.1	68.90 31.25	4
11461	31" X 575 (mm)	0.63 16.0	31.02 787.9	0.87 22.1	0.55 14.0	0.47 11.9	39.57 1005.1	22.64 575.0	41.38 1051.1	72.00 32.65	
11323	31" - 600 (mm)	0.63 16.0	31.02 787.9	0.87 22.1	0.55 14.0	0.47 11.9	39.57 1005.1	23.62 599.9	25.43 645.9	73.50 33.33	4
11462	31" X 625 (mm)	0.63 16.0	31.02 787.9	0.87 22.1	0.55 14.0	0.47 11.9	39.57 1005.1	24.61 625.0	41.38 1051.1	79.50 36.05	
11463	31" X 650 (mm)	0.63 16.0	31.02 787.9	0.87 22.1	0.55 14.0	0.47 11.9	39.57 1005.1	25.59 650.0	41.38 1051.1	82.50 37.41	
11464	33" X 560 (mm)	0.59 15.0	32.52 826.0	0.87 22.1	0.55 14.0	0.47 11.9	44.09 1119.9	22.05 560.0	23.83 605.4	138.00 62.59	
11324	33" - 600 (mm)	0.59 15.0	32.52 826.0	0.87 22.1	0.55 14.0	0.47 11.9	44.09 1119.9	23.62 599.9	25.59 650.0	81.80 37.10	4
11325	33" - 650 (mm)	0.59 15.0	32.52 826.0	0.87 22.1	0.55 14.0	0.47 11.9	44.09 1119.9	25.59 650.0	27.56 700.0	93.20 42.27	4
11466	33" X 710 (mm)	0.59 15.0	32.52 826.0	0.87 22.1	0.55 14.0	0.47 11.9	44.09 1119.9	27.95 710.0	46.06 1169.9	84.00 38.10	
11326	33" - 745 (mm)	0.59 15.0	32.52 826.0	0.87 22.1	0.55 14.0	0.47 11.9	44.09 1119.9	29.33 745.0	31.30 795.0	99.00 44.90	4
11327	33" - 820 (mm)	0.59 15.0	32.52 826.0	0.87 22.1	0.55 14.0	0.47 11.9	44.09 1119.9	32.28 819.9	34.25 870.0	109.00 49.55	4
11328	33" - 860 (mm)	0.59 15.0	32.52 826.0	0.87 22.1	0.55 14.0	0.47 11.9	44.09 1119.9	33.86 860.0	35.83 910.1	114.00 51.70	4
11465	33" X 900 (mm)	0.59 15.0	32.52 826.0	0.87 22.1	0.55 14.0	0.47 11.9	44.09 1119.9	35.43 900.0	37.37 949.2	110.00 49.89	
11329	33" - 950 (mm)	0.63 16.0	32.52 826.0	0.87 22.1	0.55 14.0	0.47 11.9	44.09 1119.9	37.40 950.0	39.45 1002.0	121.00 55.00	4

# TARAY INTERNATIONAL CORPORATION



## Large Truck / Rear Farm

Bladder Code	Reference Size (mm)	Crown Gauge A (mm)	Foot I.D. B (mm)	Foot Height C (mm)	Foot Width D (mm)	Neck Gauge E (mm)	Outside Diameter F (mm)	Overall Height G (mm)	Effective Periphery H (mm)	Wt. Lbs. (Kilos)	Etch Page 19
11330	33" - 990 (mm)	0.63 16.0	32.52 826.0	0.87 22.1	0.55 14.0	0.47 11.9	44.09 1119.9	38.98 990.1	41.02 1041.9	122.00 55.33	4
11331	33" -1040 (mm)	0.63 16.0	32.52 826.0	0.87 22.1	0.55 14.0	0.47 11.9	44.09 1119.9	40.94 1039.9	42.99 1091.9	131.00 59.41	4
11453	33" X 1170 (mm)	0.59 15.0	32.52 826.0	0.87 22.1	0.55 14.0	0.47 11.9	44.09 1119.9	46.06 1170.0	46.06 1169.9	150.00 68.18	
11474	33" X 1210 (mm)	0.59 15.0	32.52 826.0	0.87 22.1	0.55 14.0	0.47 11.9	44.09 1119.9	41.34 1050.0	34.25 869.9	162.00 73.47	
11483	34"-38" large (mm)	0.40 10.2	29.0 736.6	1.25 31.8	0.63 16.0	0.63 16.0	38.06 966.7	29.60 751.8	33.78 858.0	69.10 31.34	1
4746	34"-38" large (mm)	0.40 10.2	29.50 749.3	1.25 31.8	0.63 16.0	0.63 16.0	38.06 966.7	29.60 751.8	33.78 858.0	69.10 31.34	1
7106	34"-38" X-large (mm)	0.48 12.2	29.50 749.3	1.33 33.8	0.63 16.0	0.63 16.0	38.00 965.2	36.14 918.0	40.00 1016.0	97.10 44.04	3
11469	35" X 385 (mm)	0.49 12.4	35.06 890.5	1.38 35.1	0.63 16.0	0.47 11.9	44.09 1119.9	15.16 385.0	45.66 1159.9	65.00 29.48	
11470	35" X 450 (mm)	0.49 12.4	35.06 890.5	1.38 35.1	0.63 16.0	0.47 11.9	44.09 1119.9	17.72 450.0	45.66 1159.9	63.00 28.57	
11471	35" X 485 (mm)	0.49 12.4	35.06 890.5	1.38 35.1	0.63 16.0	0.47 11.9	44.09 1119.9	19.09 485.0	45.66 1159.9	67.00 30.39	
11472	35" X 550 (mm)	0.49 12.4	35.06 890.5	1.38 35.1	0.63 16.0	0.47 11.9	44.09 1119.9	21.65 550.0	46.06 1169.9	76.00 34.47	
11467	39" X 385 (mm)	0.49 12.4	38.39 975.1	1.38 35.1	0.63 16.0	0.47 11.9	44.09 1119.9	15.16 385.0	45.66 1159.9	68.00 30.84	
11332	39" - 450 (mm)	0.49 12.4	38.39 975.1	1.38 35.1	0.63 16.0	0.47 11.9	44.09 1119.9	17.72 450.1	19.29 490.0	69.30 31.43	4
11333	39" - 485 (mm)	0.49 12.4	38.39 975.1	1.38 35.1	0.63 16.0	0.47 11.9	44.09 1119.9	19.09 484.9	20.67 525.0	70.00 31.75	4
11468	39" X 550 (mm)	0.49 12.4	38.39 975.1	1.38 35.1	0.63 16.0	0.47 11.9	44.09 1119.9	21.65 550.0	45.66 1159.9	77.00 35.00	
8438	42" (mm)	0.48 12.2	33.00 838.2	1.33 33.8	0.63 16.0	0.63 16.0	40.00 1016.0	36.22 920.0	40.00 1016.0	110.50 50.11	3
10928	42" (mm)	0.48 12.2	33.00 838.2	1.00 25.4	0.63 16.0	0.63 16.0	40.00 1016.0	36.22 920.0	40.00 1016.0	106.00 48.18	3
10128	Med46"BOM/Radial (mm)	0.39 9.9	42.23 1072.6	1.36 34.5	0.63 16.0	0.64 16.3	59.25 1505.0	21.63 549.4	30.65 778.5	118 53.63	
10127	Lq46"BOM/Radial (mm)	0.39 9.9	42.23 1072.6	1.36 34.5	0.63 16.0	0.64 16.3	59.25 1505.0	25.38 644.7	34.40 873.8	128.0 58.18	
10098	32"X-large (mm)	0.55 14.0	27.00 685.8	1.25 31.8	0.56 14.2	0.63 16.0	39.00 990.6	54.4 1381.8	57.00 1447.8	148.00 67.12	

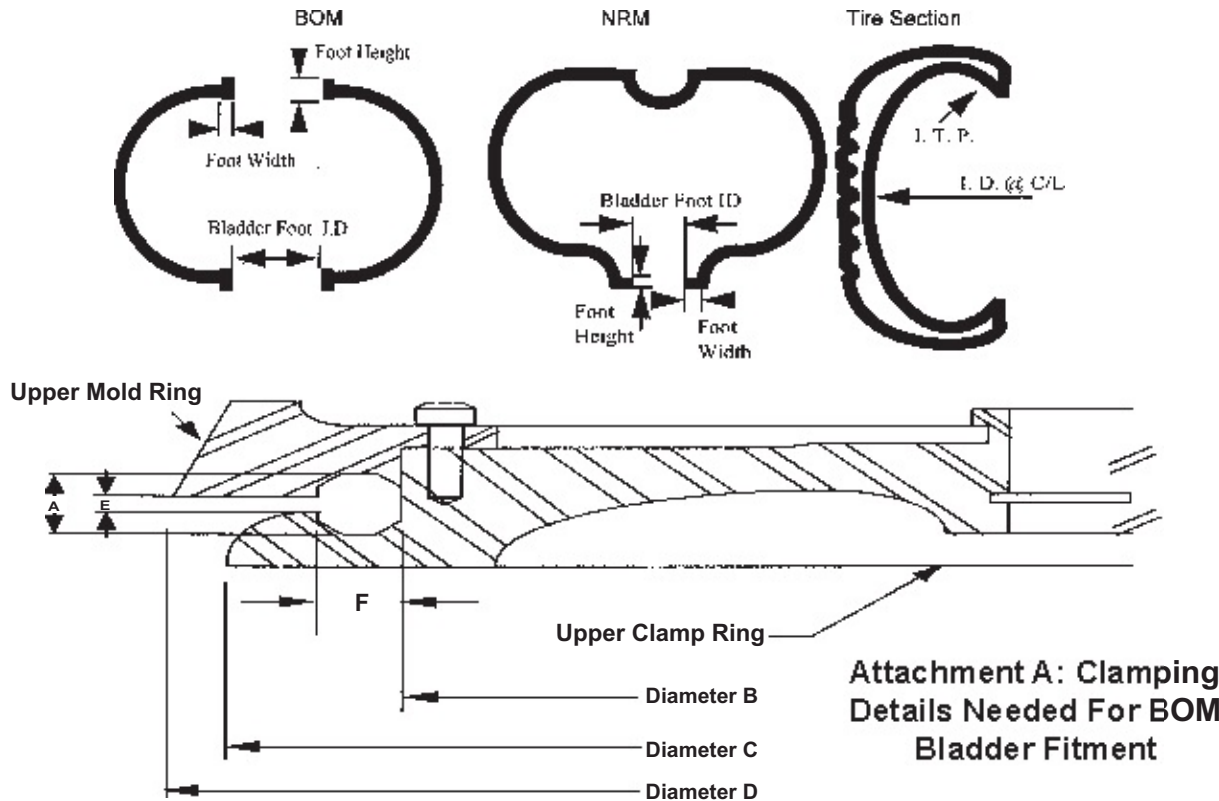
## TIRE / PRESS INFORMATION FOR BLADDER FIT CALCULATION

(Return completed form for Bladder Recommendation)

TIRE SIZE with rim diameter			
TIRE TYPE (Bias or Radial)			
CLAMP DIAMETER			
PRESS TYPE (NRM or similiar , BOM)*			
TIRE I.T.P (see sketch below) (Inside toe to toe periphery)			
DRUM SET **			
ID. @ C/L (see sketch below)			
CURRENT BLADDER USED (Maker and code)			
BLADDER FOOT ID. (current)			
BLADDER FOOT HEIGHT (current)			
BLADDER FOOT WIDTH (current)			

\*Tiltback (BOM or similiar), Slideback (NRM or similiar). For NRM type presses, please indicate if Center Post or Bagwell. For Bagwell, please indicate size (13", 17", or 20")

\*\*For bias tires please specify drum set. For radial tires please specify secondary drum set (distance between the beads on the shaping drum of the second stage tire building machine).



Tire Size:	"A"	"B"	"C"	"D"	"E"	"F"

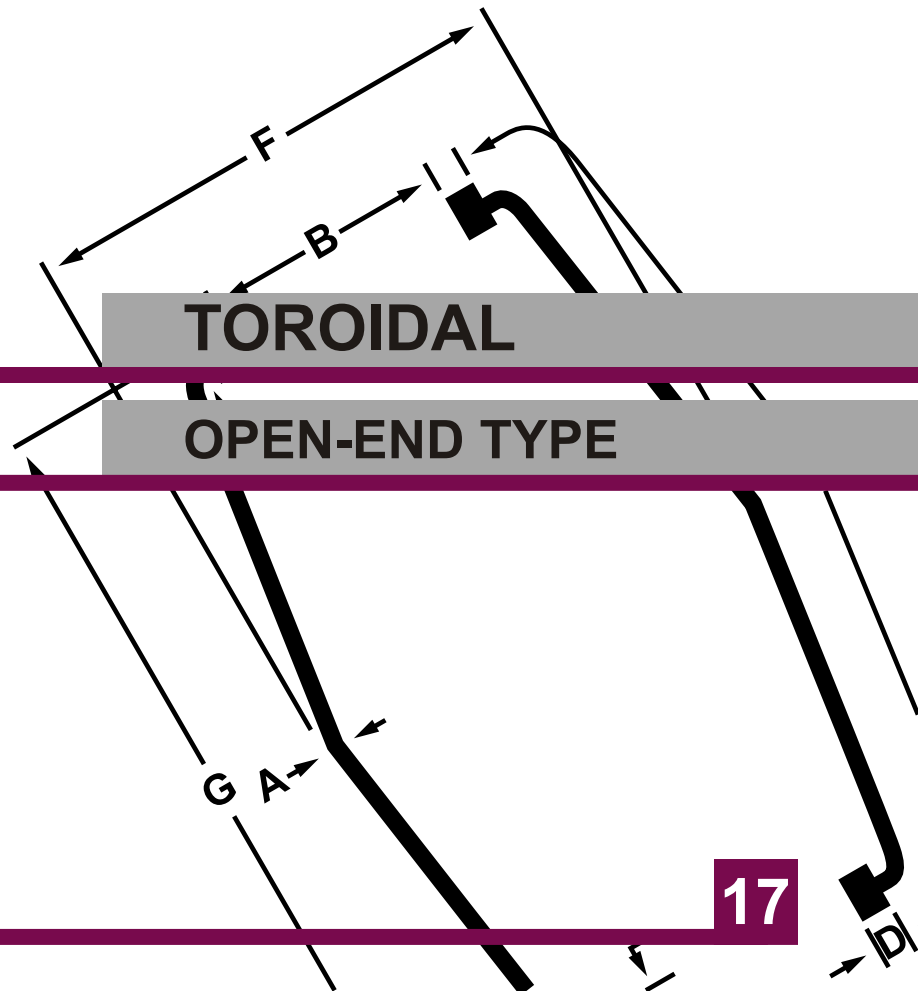




# TARAY

INTERNATIONAL

C O R P O R A T I O N



**TOROIDAL**

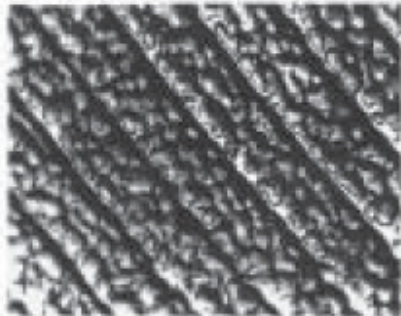
**OPEN-END TYPE**



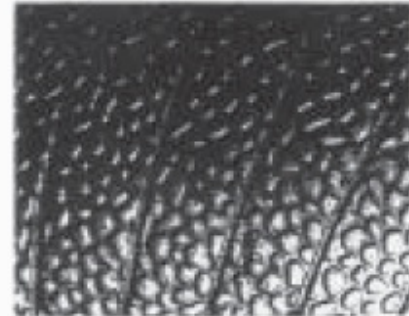
## BLADDER VENTING / ETCHING

1. Vented with SMALL PEBBLE etching.
2. Vented with MEDIUM PEBBLE etching.
3. Vented with LARGE PEBBLE etching.
4. Vented with NO etching.
5. Vented with PHOTO etching (sandpaper style).
6. Vented with NO etching - Pebble center line with no venting.
7. Vented with RIPPLE etching.
8. Unvented with SMALL PEBBLE etching.
9. Unvented with MEDIUM PEBBLE etching.
10. Unvented with LARGE PEBBLE etching.
11. Smooth surface.

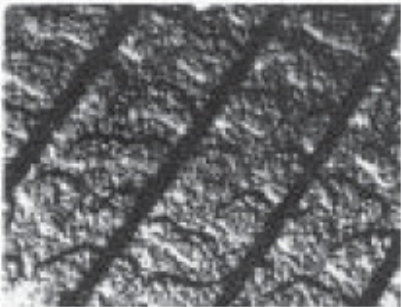
**Small Pebble**



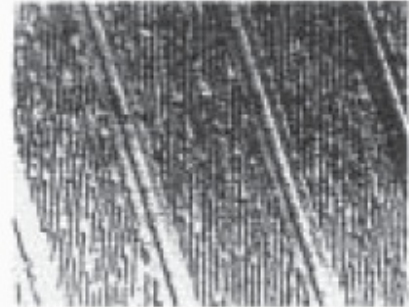
**Medium Pebble**



**Large Pebble**



**Ripple**



All vented bladders except for 2649 have right handed venting.  
Vent depth spacing and angle will vary between types of bladders.

## PACKAGING SPECIFICATIONS

Item #	Box Type	Box Qty.	Pallet Qty.	Bladder Weight Lbs.	Gross Weight Lbs.	Gross Weight Kilos.	Index Page	Item #	Box Type	Box Qty.	Pallet Qty.	Bladder Weight Lbs.	Gross Weight Lbs.	Gross Weight Kilos.	Index Page
2196	EXXON	40	40	10.8	526.0	239.1		7866	EXXON	50	50	10.2	604.0	274.5	
2636	EXXON	15	15	26.1	485.5	220.7		7941	EXXON	36	36	14.2	605.2	275.1	
2649	X BOX	25	25	19.7	586.5	266.6		8177	EXXON	12	12	31.5	472.0	214.5	
2895	EXXON	12	12	42.5	604.0	274.5		8188	X BOX	50	50	5.7	379.0	172.3	
3863	EXXON	20	20	19.3	480.0	218.2		8189	X BOX	50	50	6.4	414.0	188.2	
4171	X BOX	72	72	3.0	310.0	140.9		8358	LARGE	6	6	100.5	685.0	311.4	
4173	X BOX	60	60	4.2	346.0	157.3		8359	LARGE	6	6	120.0	802.0	364.5	
4176	EXXON	50	50	8.95	544.0	247.2		8376	EXXON	15	15	30.5	551.5	250.7	
4379	LARGE	35	35	21.7	614.8	279.5		8405	EXXON	36	36	7.8	374.8	170.4	
4493	2000	28	28	10.35	353.8	160.8		8407	EXXON	36	36	9.4	432.4	196.5	
4735	EXXON	15	15	28.8	526.0	239.1		8408	2000	36	36	10.5	442.0	200.9	
4746	2000	9	9	69.1	685.9	311.8		8409	LARGE	6	6	106.0	718.0	326.4	
4748	EXXON	30	30	14.7	535.0	243.2		8438	LARGE	8	8	110.5	966.0	439.1	
4776	EXXON	50	50	8.0	496.5	225.7		8552	X BOX	8	8	33.4	350.4	159.3	
4779	X BOX	3	3	66.1	292.3	132.9		8773	122	12	48	8.7	477.6	217.1	
4780	EXXON	3	3	97.0	385.0	175.0		8774	2000	50	50	9.4	531.5	241.6	
4781	X BOX	6	6	89.0	628.0	285.5		8775	2000	50	50	9.3	529.0	240.5	
4783	EXXON	36	36	12.50	546.5	248.4		8776	2000	96	96	5.9	630.4	286.5	
4784	EXXON	9	9	25.50	326.0	148.1		8777	REPLACED BY 7847						
4785	EXXON	9	9	34.95	411.1	186.8		8778	2000	80	80	7.4	656.0	298.2	
4789	EXXON	180	180	1.9	436.0	198.2		8779	2000	96	96	5.2	563.2	256.0	
5339	X BOX	40	40	5.9	330.0	150.0		8780	2000	96	96	6.35	673.6	306.2	
5894	EXXON	36	36	11.7	515.2	234.2		8781	2000	96	96	6.6	697.6	317.1	
5896	EXXON	36	36	12.4	540.4	245.6		8911	122	12	48	8.6	472.8	214.9	
6025	EXXON	25	25	15.15	475.3	216.0		8912	2000	48	48	9.25	508.0	230.9	
6096	EXXON	30	30	13.4	496.0	225.5		8913	122	12	48	9.55	518.4	235.6	
6226	EXXON	15	15	29.1	530.5	241.1		8937	LARGE	90	90	8.6	856.0	389.1	
6228	EXXON	40	40	9.8	486.0	220.9		8938	122	12	48	9.3	506.4	230.2	
6230	EXXON	40	40	11.9	570.0	259.1		8939	122	12	48	10.6	568.8	258.5	
6236	EXXON	15	15	23.4	445.0	202.3		9086	X BOX	30	30	10.7	404.2	183.7	
6297	EXXON	40	40	12.4	590.0	268.2		9087	LARGE	60	60	11.4	766.0	348.2	
6299	EXXON	50	50	7.7	479.0	217.7		9088	X BOX	30	30	13.3	482.2	219.2	
6319	EXXON	30	30	16.2	580.0	263.6		9089	2000	50	50	11.3	629.0	285.9	
6320	EXXON	25	25	18.3	551.5	250.7		9090	122	12	48	8.05	446.4	202.9	
6321	EXXON	25	25	23.05	672.8	305.8		9091	122	12	48	7.1	400.8	182.2	
6390	EXXON	50	50	11.1	649.0	295.0		9092	2000	48	48	7.8	438.4	199.3	
6391	EXXON	40	40	13.15	622.5	283.0		9093	2000	50	50	11.4	634.0	288.2	
6480	EXXON	15	15	17.5	356.5	162.0		9094	2000	50	50	8.6	494.0	224.5	
6537	2000	50	50	17.5	93.0	426.8		9170	LARGE	126	126	4.7	686.2	311.9	
6630	LARGE	50	50	19.9	1089.0	495.0		9340	LARGE	20	20	38.0	842.0	382.7	
6753	EXXON	6	6	42.8	353.3	160.6		9341	LARGE	20	20	39.6	874.0	397.3	
6790	EXXON	50	50	8.9	539.0	245.0		9373	LARGE	9	9	91.0	901.0	409.5	
6808	X BOX	10	10	31.9	413.0	187.7		9473	2000	48	48	8.1	452.8	205.8	
6809	X BOX	10	10	35.8	441.2	200.5		9673	2000	60	60	8.8	592.0	269.1	
6810	X BOX	10	10	38.9	472.2	214.6		9847	2000	72	72	7.2	582.4	264.7	
6811	EXXON	6	6	41.0	340.0	154.5		10068	LARGE	64	64	11.3	805.2	366.0	
6942	EXXON	36	36	10.8	482.8	219.5		10069	LARGE	64	64	12.3	869.2	395.1	
7106	LARGE	10	10	97.1	1053.0	478.6		10070	2000	64	64	9.2	652.8	296.7	
7370	EXXON	36	36	7.2	353.2	160.5		10071	2000	64	64	9.8	691.2	314.2	
7374	X BOX	216	216	1.25	353.2	160.5		10098	LARGE	4	4	148.0	686.0	311.8	
7375	X BOX	180	180	1.5	364.0	165.5		10127	LARGE	4	4	128.0	606.0	275.5	
7632	EXXON	50	50	10.9	639.0	290.5		10128	LARGE	4	4	118.0	566.0	257.3	
7646	X BOX	10	10	40.35	486.7	221.2		10612	122	18	72	7.4	592.8	269.5	
7647	EXXON	6	6	49.5	391.0	177.7		10629	122	12	48	9.8	475.4	216.1	
7651	2000	8	8	62.7	565.6	257.1		10768	122	12	48	8.3	458.4	208.4	
7652	2000	8	8	72.0	640.0	291.0		10785	2000	60	60	9.2	616.0	280.0	
7661	X BOX	6	6	65.0	484.0	220.0		10786	LARGE	80	80	10.5	922.0	419.1	
7662	EXXON	6	6	60.3	457.8	208.1		10858	2000	40	40	10.4	480.0	218.2	
7663	LARGE	10	10	71.1	805.0	365.9		10908	122	12	48	10.1	544.8	247.6	
7664	LARGE	9	9	84.0	838.0	380.9		10909	122	12	48	8.3	458.4	208.4	
7864	EXXON	50	50	7.9	489.0	222.3		10921	X BOX	20	20	24.5	584.0	265.5	
7865	EXXON	50	50	8.29	511.0	232.3		10922	X BOX	15	15	28.0	514.0	233.6	

## PACKAGING SPECIFICATIONS

Item #	Box Type	Box Qty.	Pallet Qty.	Bladder Weight Lbs.	Gross Weight Lbs.	Gross Weight Kilos.	Index Page	Item #	Box Type	Box Qty.	Pallet Qty.	Bladder Weight Lbs.	Gross Weight Lbs.	Gross Weight Kilos.	Index Page
10924	X BOX	20	20	19.9	492.0	223.6		11331	LARGE	6	6	131.0	868.0	394.5	
10927	X BOX	15	15	26.0	484.0	220.0		11332	2000	8	8	69.3	618.4	281.1	
10928	LARGE	8	8	106.0	930.0	422.7		11333	LARGE	12	12	70.0	922.0	419.1	
11195	LARGE	8	8	42.0	430.0	195.5		11344	EXXON	6	6	45.98	372.4	169.3	
11209	EXXON	30	30	7.3	315.5	143.4		11453	LARGE	5	5	150.0	844.0	383.6	
11210	EXXON	30	30	10.4	408.5	185.7		11454	LARGE	10	10	63.9	721.0	327.7	
11211	EXXON	30	30	11.0	426.5	193.9		11456	LARGE	10	10	43.6	518.0	235.5	
11212	EXXON	30	30	12.1	459.5	208.9		11457	122	12	48	7.9	384.2	174.6	
11213	EXXON	30	30	11.5	441.5	200.77		11458	LARGE	8	8	97.0	858.0	390.0	
11236	EXXON	30	30	12.6	474.5	215.77		11459	LARGE	8	8	105.0	922.0	419.1	
11237	EXXON	30	30	11.0	426.5	193.9		11461	2000	10	10	72.0	784.0	356.4	
11238	EXXON	30	30	11.4	438.5	199.3		11462	2000	10	10	79.5	859.0	390.5	
11239	EXXON	30	30	12.1	459.5	208.9		11463	2000	10	10	82.5	889.0	404.1	
11240	EXXON	15	15	24.5	461.5	209.8		11464	LARGE	10	10	138.0	1462.0	664.5	
11241	EXXON	15	15	25.6	478.0	217.3		11465	LARGE	7	7	110.0	852.0	387.3	
11242	EXXON	15	15	28.3	518.5	235.7		11466	LARGE	10	10	84.0	922.0	419.1	
11243	EXXON	12	12	31.2	468.4	212.9		11467	LARGE	12	12	68.0	898.0	408.2	
11244	EXXON	10	10	34.4	438.0	199.1		11468	LARGE	12	12	77.0	1006.0	457.3	
11245	EXXON	6	6	59.0	448.0	203.6		11469	LARGE	12	12	65.0	862.0	391.8	
11252	EXXON	30	30	7.6	324.5	147.5		11470	LARGE	12	12	63.0	838.0	380.9	
11262	2000	25	25	10.9	336.5	153.0		11471	LARGE	12	12	67.0	886.0	402.7	
11263	2000	25	25	11.2	344.0	156.4		11472	LARGE	12	12	76.0	994.0	451.8	
11264	2000	25	25	12.5	376.5	171.1		11474	LARGE	4	4	162.0	742.0	337.3	
11265	2000	25	25	13.8	409.0	185.9		11475	LARGE	5	5	120.0	694.0	315.5	
11266	2000	20	20	14.9	362.0	164.5		11477	X BOX	10	10	63.0	724.0	329.1	
11308	2000	25	25	12.4	374.0	170.0		11478	X BOX	10	10	60.3	697.0	316.8	
11309	2000	25	25	13.3	396.5	180.2		11479	LARGE	10	10	69.5	777.0	353.2	
11310	2000	20	20	14.1	346.0	157.7		11480	LARGE	10	10	84.0	922.0	419.1	
11311	2000	20	20	16.0	384.0	174.5		11483	LARGE	9	9	69.1	703.9	320.0	
11321	LARGE	10	10	112.0	1214.0	607.0		11484	2000	25	25	10.4	324.0	147.3	
11322	2000	10	10	68.9	753.0	342.3		11493	X BOX	24	24	13.9	416.8	187.5	
11323	LARGE	10	10	73.5	817.0	371.4		B0045J	EXXON	30	30	16.4	588.5	267.5	
11324	LARGE	8	8	81.8	736.4	334.7		B00529	EXXON	3	3	71.5	308.4	140.2	
11325	LARGE	8	8	93.2	839.6	381.6		B0109N	EXXON	12	12	29.5	448.0	203.6	
11326	LARGE	8	8	99.0	886.0	402.7		B08132	EXXON	36	36	9.0	418.0	190.0	
11327	LARGE	8	8	109.0	954.0	433.6		B08342	EXXON	25	25	13.7	436.5	198.4	
11328	LARGE	7	7	114.0	880.0	400.0		B0923M	EXXON	12	12	25.7	402.4	182.9	
11329	LARGE	7	7	121.0	929.0	422.3		B0924M	EXXON	12	12	32.0	478.0	217.3	
11330	LARGE	6	6	122.0	814.0	370.0		B0944F	EXXON	3	3	50.5	245.5	111.6	

## SPECIAL ORDER ITEMS

Item #	Page #	Item #	Page #	Item #	Page #	Item #	Page #
11405	28	11417	37	11436	37	11441	36
11406	28	11418	37	11437	37	11442	37
11407	37	11419	28	11431	37	11443	36
11408	28	11420	37	11432	28	11444	37
11409	28	11421	37	11433	28	11445	36
11410	37	11422	28	11434	28	11446	37
11411	28	11423	37	11435	36	11447	36
11412	28	11424	28	11436	36	11448	37
11413	28	11425	37	11437	28	11449	36
11414	28	11426	37	11438	28	11450	37
11415	28	11427	28	11439	28	11451	36
11416	28	11428	37	11440	36	11452	37

## BLADDER PACKAGING



### **BOX : 122**

**Box Measurements:** 21" wide, 26" long, 31" high (not including pallet)  
44" wide, 54" long, 36" high (including pallet)

**Note:** Height measurements may vary.



### **BOX : EXXON**

**Box Measurements:** 32" wide, 50" long, 40" high (including pallet)

**Note:** Height measurements may vary.



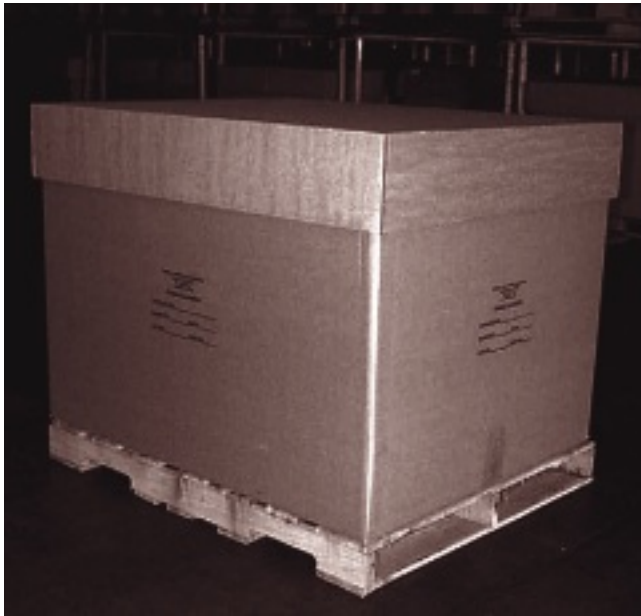
### **BOX : LARGE**

**Box Measurements:** 44" wide, 54" long, 40" high (including pallet)

**Note:** Height measurements may vary.

## BLADDER PACKAGING

Bladders shown without a quantity per pallet will be “Specialty Packed”.  
Customers will be notified of box measurements for export shipments.



### **BOX : 2000**

**Box Measurements:** 40” wide, 48” long, 41” high (including pallet)

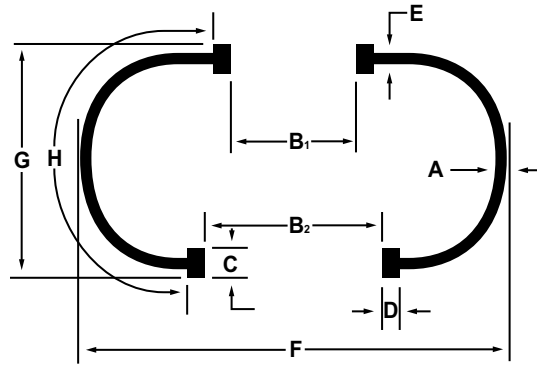
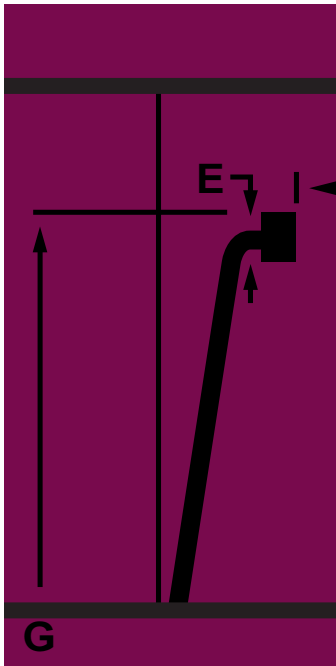
**Note:** Height measurements may vary.



### **BOX : X-BOX**

**Box Measurements:** 32” wide, 50” long, 40” high (including pallet)

**Note:** Height measurements may vary.



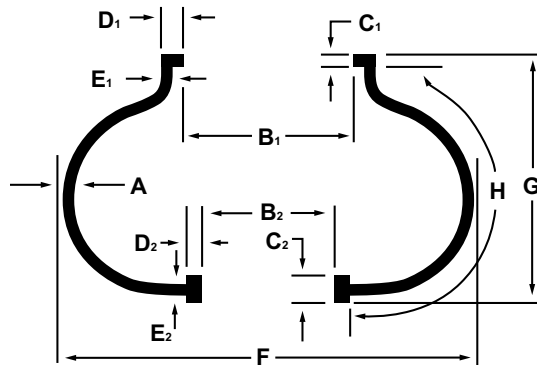
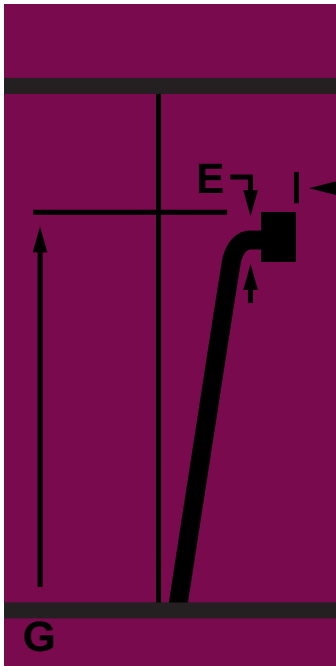
**Non-Symmetrical Passenger**

**G**

Bladder Code	Reference Size (mm)	Crown Gauge	Foot I.D.		Foot Height		Foot Width		Neck Gauge		Outside Diameter F (mm)	Overall Height G (mm)	Effective Periphery H (mm)	Wt. Lbs. (Kilos)	Etch Page 19
		A (mm)	B1 (mm)	B2 (mm)	C1 (mm)	C2 (mm)	D1 (mm)	D2 (mm)	E1 (mm)	E2 (mm)					
8405	12"/13" (mm)	0.28 7.1	10.66 270.8	8.60 218.4	0.54 13.7	0.82 20.8	0.57 14.5	0.50 12.7	0.28 7.1	0.28 7.1	18.00 457.2	9.27 235.5	13.32 338.3	7.80 3.54	4



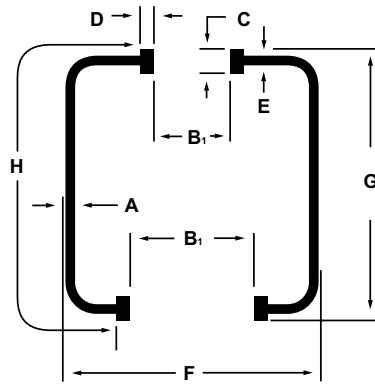
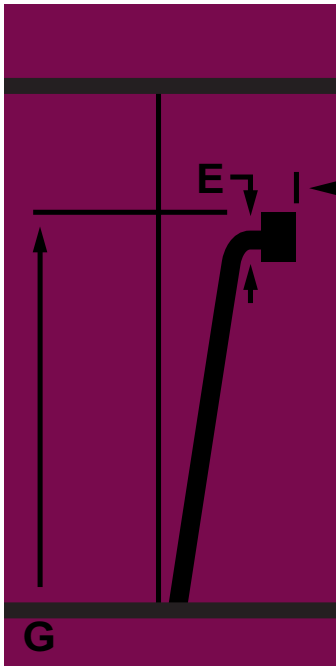
# TARAY INTERNATIONAL CORPORATION



Autelok Type Passenger / Light Truck

Bladder Code	Reference Size (mm)	Crown Gauge A (mm)	Foot I.D. B (mm)		Foot Height C (mm)		Foot Width D (mm)		Neck Gauge E (mm)		Outside Diameter F (mm)	Overall Height G (mm)	Effective Periphery H (mm)	Wt. Lbs. (Kilos)	Etch Page 19
9473	12" / 13" (mm)	0.16	8.86	6.00	0.78	0.84	0.70	0.54	0.38	0.38	18.90	11.19	17.14	8.10	4
		4.1	225.0	152.4	19.8	21.3	17.8	13.7	9.7	9.7	480.1	284.0	442.0	3.68	
9673	13" / 14"	0.16	8.86	6.00	0.78	0.84	0.70	0.54	0.38	0.38	18.90	13.19	19.14	8.80	2

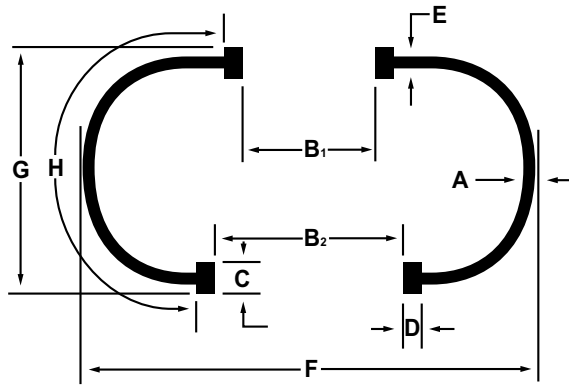
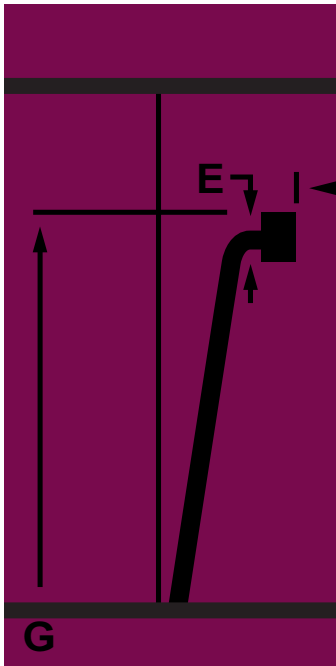
# TARAY INTERNATIONAL CORPORATION



Autelok Type Large Truck

Bladder Code	Reference Size (mm)	Crown Gauge A (mm)	Foot I.D.		Foot Height C (mm)	Foot Width D (mm)	Neck Gauge E (mm)	Outside Diameter F (mm)	Overall Height G (mm)	Effective Periphery H (mm)	Wt. Lbs. (Kilos)	Etch Page 19
			B1 B (mm)	B2 B (mm)								
8552	20/22/22.5/24.5" (mm)	0.35 8.9	11.75 298.5	14.00 355.6	1.03 26.0	0.60 15.2	0.63 16.0	26.00 660.4	20.84 529.3	27.75 704.9	33.40 15.15	4

# TARAY INTERNATIONAL CORPORATION

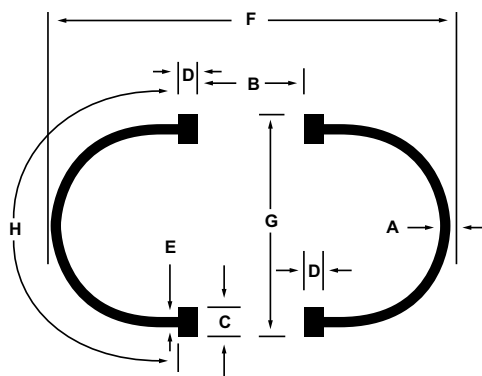
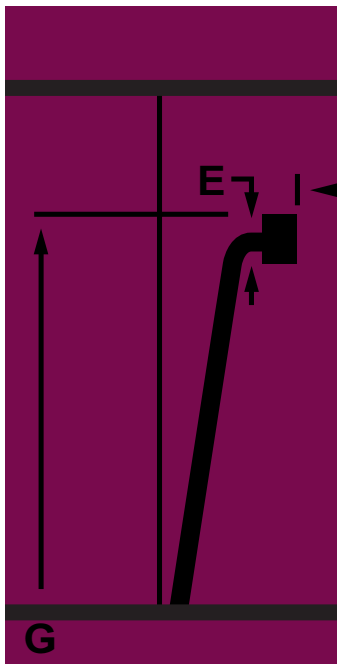


Krupp Non-Symmetrical Passenger / Light Truck

G

Bladder Code	Reference Size (mm)	Crown Gauge A (mm)	Foot I.D.		Foot Height C (mm)	Foot Width D (mm)	Neck Gauge E (mm)	Outside Diameter F (mm)	Overall Height G (mm)	Effective Periphery H (mm)	Wt. Lbs. (Kilos)	Etch Page 19
			B1 B (mm)	B2 B (mm)								
8937	15" SMLT (mm)	0.18 4.6	7.50 190.5	10.00 254.0	0.90 22.9	0.43 10.9	0.25 6.4	22.30 566.4	14.75 374.7	18.80 477.5	8.60 3.90	5
8938	15" LT (mm)	0.18 4.6	7.50 190.5	10.00 254.0	0.90 22.9	0.43 10.9	0.25 6.4	22.30 566.4	17.15 435.6	21.20 538.5	9.30 4.22	5
8939	16" SMLT (mm)	0.18 4.6	7.50 190.5	10.00 254.0	0.90 22.9	0.43 10.9	0.25 6.4	22.30 566.4	19.75 501.7	22.8 579.1	10.60 4.81	5
10785	16" (mm)	0.17 4.3	7.40 188.0	9.88 251.0	0.90 22.9	0.43 10.9	0.30 7.6	20.75 527.1	11.51 292.4	20.25 514.4	9.20 4.17	5
10786	16" (mm)	0.17 4.3	7.40 188.0	9.88 251.0	0.90 22.9	0.43 10.9	0.30 7.6	20.75 527.1	13.01 330.5	21.75 552.5	10.50 4.76	5

# TARAY INTERNATIONAL CORPORATION



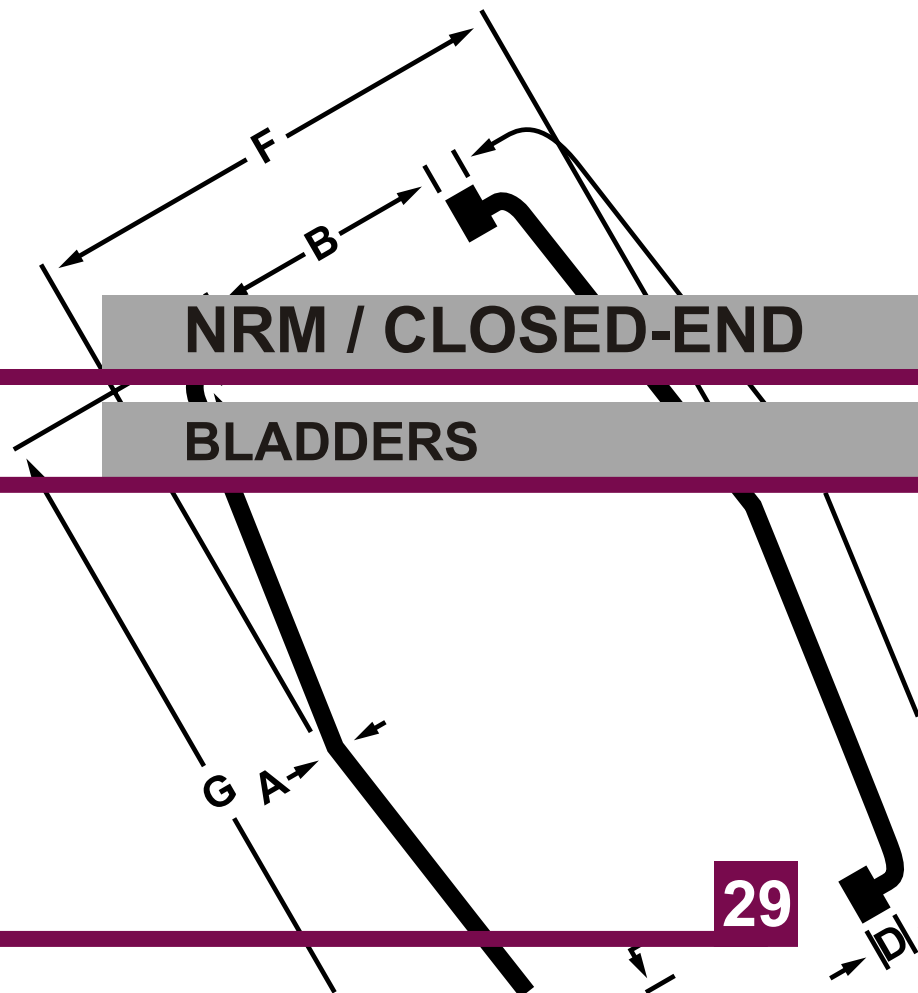
## BOM Thin Wall Passenger / Light Truck

Bladder Code	Reference Size (mm)	Crown Gauge A (mm)	Foot I.D.		Foot Height C (mm)	Foot Width D (mm)	Neck Gauge E (mm)	Outside Diameter F (mm)	Overall Height G (mm)	Effective Periphery H (mm)	Wt. Lbs. (Kilos)	Etch Page 19
			B1 B (mm)	B2								
9170	12"	0.165	8.80	0.82	0.50	0.33	16.75	8.77	12.25	4.70	120	5
	(mm)	4.2	223.5	20.8	12.7	8.4	425.5	222.8	311.2	2.14		
8779	13"	0.165	8.80	0.82	0.50	0.33	18.00	9.11	13.30	5.20	96	5
	(mm)	4.2	223.5	20.8	12.7	8.4	457.2	231.4	337.8	2.36		
8780	13"	0.165	8.80	0.82	0.50	0.33	18.00	10.36	14.55	6.35	96	5
	(mm)	4.2	223.5	20.8	12.7	8.4	457.2	263.1	369.6	2.89		
8781	13"	0.165	8.80	0.82	0.50	0.33	18.00	11.61	15.80	6.60	96	5
	(mm)	4.2	223.5	20.8	12.7	8.4	457.2	294.9	401.3	3.00		
8776	14"	0.165	9.75	0.82	0.50	0.33	19.00	10.15	14.37	5.90	96	5
	(mm)	4.2	247.7	20.8	12.7	8.4	482.6	257.8	365.0	2.68		
8777	Replaced by the 9847											
9847	14"	0.165	9.75	0.82	0.50	0.33	19.00	11.65	15.87	7.20	90	5
	(mm)	4.2	247.7	20.8	12.7	8.4	482.6	295.9	403.1	3.27		
8778	14"	0.165	9.75	0.82	0.50	0.33	19.00	13.15	17.37	7.40	80	5
	(mm)	4.2	247.7	20.8	12.7	8.4	482.6	334.0	441.2	3.36		
10612	Lg 14"	0.165	9.75	0.82	0.50	0.33	20.25	11.30	16.25	7.40	96	5
	(mm)	4.2	247.7	20.8	12.7	8.4	514.4	287.0	412.8	3.36		
8911	Lg 14"	0.165	9.75	0.82	0.50	0.33	20.25	12.80	17.75	8.60	80	5
	(mm)	4.2	247.7	20.8	12.7	8.4	514.4	325.1	450.9	3.91		
8773	15"	0.165	10.90	0.82	0.50	0.33	22.00	11.48	16.75	8.70	80	5
	(mm)	4.2	276.9	20.8	12.7	8.4	558.8	291.6	425.5	3.95		
8774	15"	0.165	10.90	0.82	0.50	0.33	22.00	12.98	18.25	7.40	80	5
	(mm)	4.2	276.9	20.8	12.7	8.4	558.8	329.7	463.6	4.27		
8775	15"	0.165	10.90	0.82	0.50	0.33	22.00	14.48	19.75	9.30	80	5
	(mm)	4.2	276.9	20.8	12.7	8.4	558.8	367.8	501.7	4.23		
9086	16"/16.5"	0.165	10.90	0.82	0.50	0.33	23.50	15.87	22.00	10.70	70	5
	(mm)	4.2	276.9	20.8	12.7	8.4	596.9	403.1	558.8	4.86		
11493	16"/16.5"	0.250	10.90	0.82	0.50	0.33	23.50	15.87	22.00	13.90		
	(mm)	6.3	276.9	20.8	12.7	8.4	596.9	403.1	558.8	6.30		
9087	16"/16.5"	0.165	10.90	0.82	0.50	0.33	23.50	17.87	24.00	11.40	60	5
	(mm)	4.2	276.9	20.8	12.7	8.4	596.9	453.9	609.6	5.18		
9088	16"/16.5"	0.165	10.90	0.82	0.50	0.33	23.50	20.87	27.00	13.30	50	5
	(mm)	4.2	276.9	20.8	12.7	8.4	596.9	530.1	685.8	6.05		



**TARAY**  
INTERNATIONAL

C O R P O R A T I O N

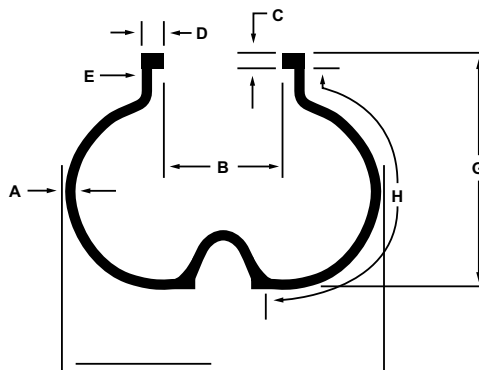
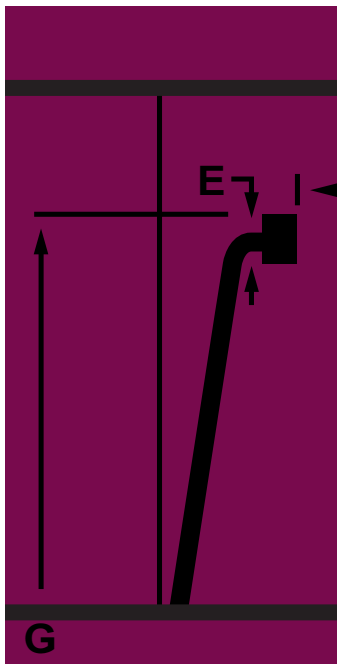


**NRM / CLOSED-END**

**BLADDERS**



# TARAY INTERNATIONAL CORPORATION

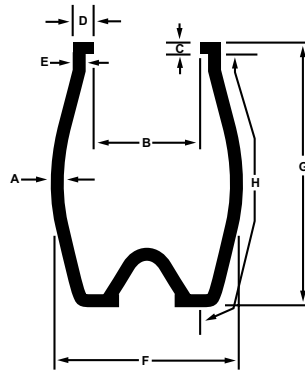
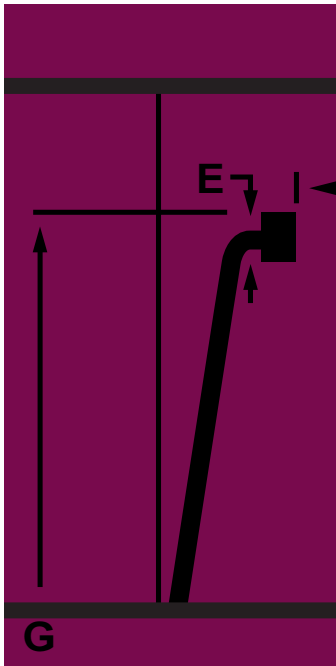


Bagwell Size Radial Design Passenger / Light Truck

G

Bladder Code	Reference Size (mm)	Crown Gauge A (mm)	Foot I.D. B (mm)	Foot Height C (mm)	Foot Width D (mm)	Neck Gauge E (mm)	Outside Diameter F (mm)	Overall Height G (mm)	Effective Periphery H (mm)	Wt. Lbs. (Kilos)	Etch Page 19
6942	13" (mm)	0.25 6.4	10.66 270.8	0.54 13.7	0.57 14.5	0.25 6.4	19.00 482.6	11 279.4	16.03 407.2	10.80 4.90	4
6096	14" PASS (mm)	0.30 7.6	10.66 270.8	0.54 13.7	0.57 14.5	0.30 7.6	22.00 558.8	11.5 292.1	17.71 449.8	13.40 6.09	4
7941	14" - 15" PASS (mm)	0.33 8.4	10.66 270.8	0.54 13.7	0.57 14.5	0.33 8.4	19.00 482.6	14.00 355.6	19.03 483.4	14.20 6.44	4
6025	15" PASS (mm)	0.30 7.6	10.66 270.8	0.54 13.7	0.57 14.5	0.30 7.6	22.00 558.8	14.00 355.6	20.21 513.3	15.15 6.89	4
6537	15" PASS/LT (mm)	0.30 7.6	10.66 270.8	0.54 13.7	0.57 14.5	0.30 7.6	22.00 558.8	16.50 419.1	22.59 573.8	17.50 7.94	4
6630	15" PASS/LT (mm)	0.30 7.6	10.66 270.8	0.54 13.7	0.57 14.5	0.30 7.6	22.00 558.8	19.50 495.3	25.59 650.0	19.90 9.02	4
8407	12" / 13" (mm)	0.28 7.1	10.66 270.8	0.54 13.7	0.57 14.5	0.28 7.1	18.00 457.2	9.00 228.6	13.87 352.3	9.40 4.27	4
8408	12" / 13" (mm)	0.28 7.1	10.66 270.8	0.54 13.7	0.57 14.5	0.28 7.1	18.00 457.2	10.25 260.4	15.12 384.0	10.50 4.76	4

# TARAY INTERNATIONAL CORPORATION

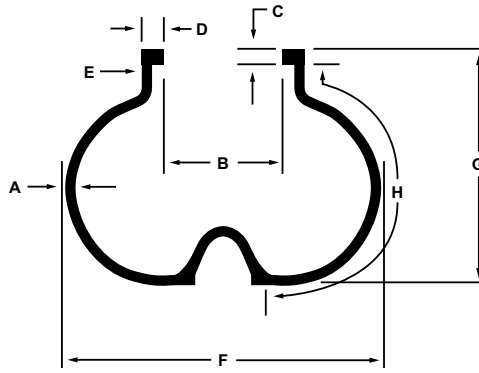
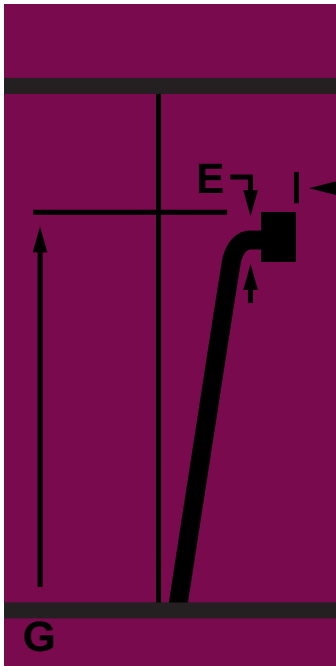


Bagwell Size Radial Design Passenger / Light Truck

Bladder Code	Reference Size (mm)	Crown Gauge A (mm)	Foot I.D. B (mm)	Foot Height C (mm)	Foot Width D (mm)	Neck Gauge E (mm)	Outside Diameter F (mm)	Overall Height G (mm)	Effective Periphery H (mm)	Wt. Lbs. (Kilos)	Etch Page 19
4176	13"/14" X-small (mm)	0.26 6.6	10.66 270.8	0.54 13.7	0.57 14.5	0.26 6.6	16.50 419.1	12.50 317.5	14.60 370.8	8.95 4.06	1
4493	13"/14" medium (mm)	0.26 6.6	10.66 270.8	0.54 13.7	0.57 14.5	0.26 6.6	16.50 419.1	15.50 393.7	17.60 447.0	10.35 4.70	1
4783	13" large (mm)	0.26 6.6	10.66 270.8	0.54 13.7	0.57 14.5	0.26 6.6	16.50 419.1	18.50 469.9	20.60 523.2	12.50 5.68	1
5894	13"/14"/15" med (mm)	0.26 6.6	10.66 270.8	0.54 13.7	0.57 14.5	0.30 7.6	14.50 368.3	20.90 530.9	21.71 551.4	11.70 5.31	1
5896	14"/15"/16" Lg (mm)	0.26 6.6	10.66 270.8	0.54 13.7	0.57 14.5	0.30 7.6	14.50 368.3	23.40 594.4	24.21 614.9	12.40 5.62	1
6480	14"/15"/16" X-Lg (mm)	0.26 6.6	10.66 270.8	0.54 13.7	0.57 14.5	0.26 6.6	14.50 368.3	26.50 673.1	27.44 697.0	17.50 7.94	1
4748	15"/16" large (mm)	0.26 6.6	10.66 270.8	0.54 13.7	0.57 14.5	0.26 6.6	17.50 444.5	23.00 584.2	24.71 627.6	14.70 6.68	1



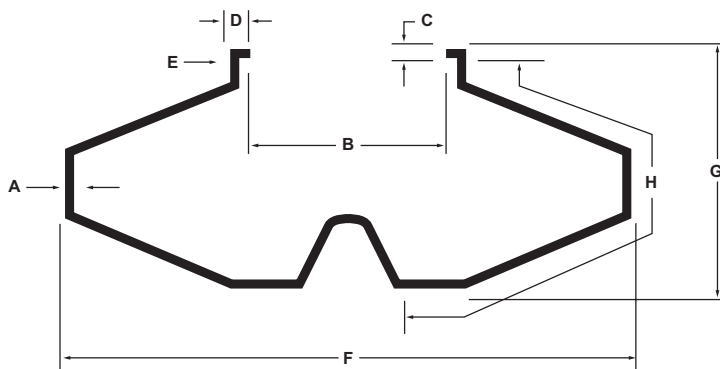
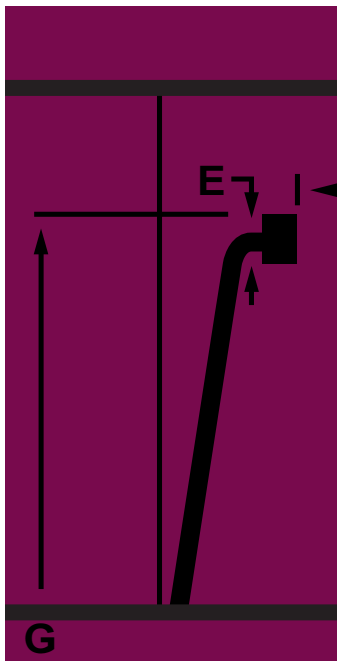
# TARAY INTERNATIONAL CORPORATION



## Bagwell Size Large Truck

Bladder Code	Reference Size (mm)	Crown Gauge A (mm)	Foot I.D. B (mm)	Foot Height C (mm)	Foot Width D (mm)	Neck Gauge E (mm)	Outside Diameter F (mm)	Overall Height G (mm)	Effective Periphery H (mm)	Wt. Lbs. (Kilos)	Etch Page 19
4379	20" small (mm)	0.40 10.2	13.62 345.9	0.80 20.3	0.88 22.4	0.40 10.2	23.00 584.2	15.50 393.7	18.09 459.5	21.70 9.84	1
4784	20" medium (mm)	0.40 10.2	13.62 345.9	0.80 20.3	0.88 22.4	0.40 10.2	23.00 584.2	19.50 495.3	22.09 561.1	25.50 11.39	1
4785	20" / 22" large (mm)	0.40 10.2	13.62 345.9	0.80 20.3	0.88 22.4	0.40 10.2	23.00 584.2	22.50 571.5	25.09 637.3	34.95 15.88	1
6753	24" (mm)	0.40 10.2	13.62 345.9	0.80 20.3	0.88 22.4	0.50 12.7	26.00 660.4	27.50 698.5	34.22 869.2	42.80 19.45	5

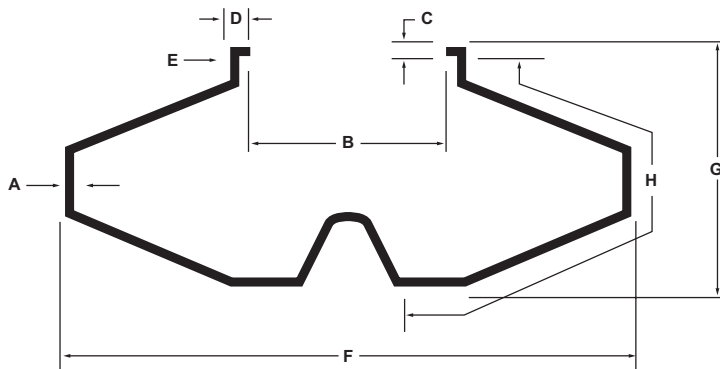
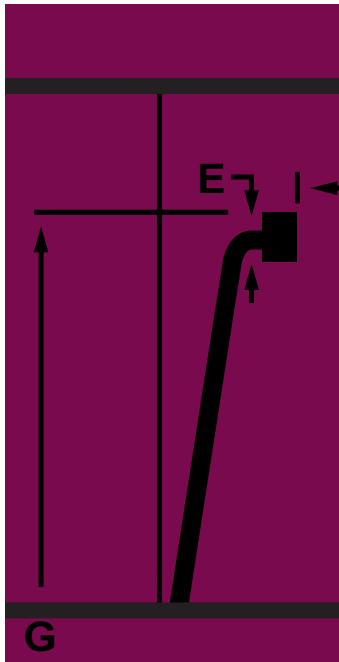
# TARAY INTERNATIONAL CORPORATION



Bagwell Perform Radial Design Passenger / Light Truck

Bladder Code	Reference Size (mm)	Crown Gauge A (mm)	Foot I.D. B (mm)	Foot Height C (mm)	Foot Width D (mm)	Neck Gauge E (mm)	Outside Diameter F (mm)	Overall Height G (mm)	Effective Periphery H (mm)	Wt. Lbs. (Kilos)	Etch Page 19
10909	12" / 13" Pas (mm)	0.23 5.8	7.80 198.1	0.57 14.5	0.59 15.0	0.35 8.9	20.20 513.1	9.50 241.3	14.50 368.3	8.30 3.76	4
10768	12" / 13" Pas (mm)	0.23 5.8	9.44 239.8	0.57 14.5	0.59 15.0	0.35 8.9	19.68 499.9	10.04 255.0	16.87 428.5	8.30 3.76	4
10858	14" / 15" Pas (mm)	0.23 5.8	11.22 285.0	0.57 14.5	0.59 15.0	0.35 8.9	20.28 515.1	12.20 309.9	18.35 466.1	10.40 4.72	4
10908	14" / 15" Pas (mm)	0.23 5.8	11.22 285.0	0.57 14.5	0.63 16.0	0.35 8.9	20.87 530.1	12.50 317.5	17.95 455.9	10.10 4.58	4
11195	19" (mm)	0.35 8.9	14.50 368.3	0.79 20.1	0.87 22.1	0.46 11.7	34.87 885.7	19.0 482.6	29.0 736.6	42.0 19.1	4

# TARAY INTERNATIONAL CORPORATION

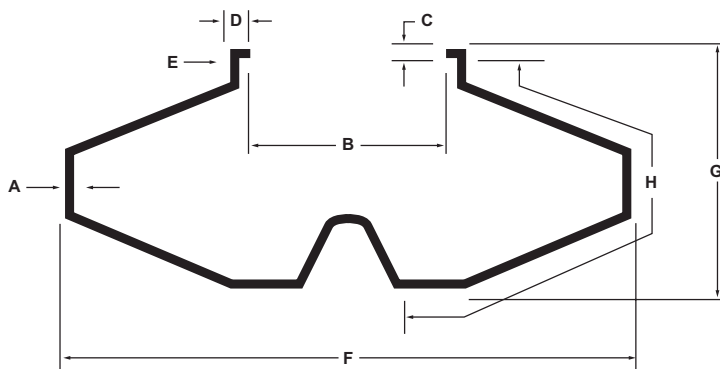
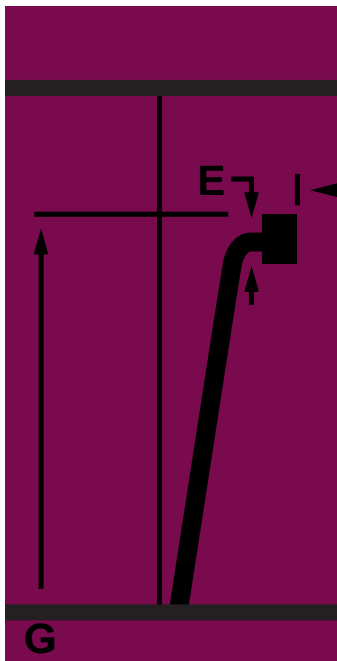


Bagwell Perform Radial Design Passenger / Light Truck

## SPECIAL ORDER ITEMS

Bladder Code	Reference Size (mm)	Crown Gauge A (mm)	Foot I.D. B (mm)	Foot Height C (mm)	Foot Width D (mm)	Neck Gauge E (mm)	Outside Diameter F (mm)	Overall Height G (mm)	Effective Periphery H (mm)	Wt. Lbs. (Kilos)	Etch Page 19
11405	10" X 153 X 445	0.24	9.44	0.57	0.63	0.354	9.21	6.02	17.52	7.17	4
	(mm)	6.0	239.8	14.5	16.0	9.0	234.0	153.0	445.0	3.25	
11406	10" X 160 X 475	0.24	9.44	0.57	0.59	0.315	9.37	6.30	18.70	8.12	4
	(mm)	6.0	239.8	14.5	15.0	8.0	238.0	160.0	475.0	3.68	
11408	10" X 175 X 500	0.24	9.44	0.57	0.59	0.354	10.04	6.99	19.69	8.43	4
	(mm)	6.0	239.8	14.5	15.0	9.0	255.0	177.5	500.0	3.82	
11409	10" X 198 X 535	0.24	9.44	0.57	0.59	0.354	10.71	7.80	21.06	9.89	4
	(mm)	6.0	239.8	14.5	15.0	9.0	272.0	198.0	535.0	4.49	
11411	10" X 208 X 500	0.24	9.44	0.57	0.59	0.354	10.67	8.19	19.69	8.74	4
	(mm)	6.0	239.8	14.5	15.0	9.0	271.0	208.0	500.0	3.96	
11412	10" X 220 X 455	0.24	9.44	0.57	0.59	0.354	11.42	8.66	17.91	8.01	4
	(mm)	6.0	239.8	14.5	15.0	9.0	290.0	220.0	455.0	3.63	
11413	10" X 243 X 460	0.24	9.44	0.57	0.59	0.354	11.81	9.57	18.11	8.74	4
	(mm)	6.0	239.8	14.5	15.0	9.0	300.0	243.0	460.0	3.96	
11414	10" X 245 X 530	0.24	9.44	0.57	0.59	0.354	11.93	9.65	20.87	10.00	4
	(mm)	6.0	239.8	14.5	15.0	9.0	303.0	245.0	530.0	4.54	
11415	10" X 270 X 530	0.24	9.44	0.57	0.59	0.354	12.91	10.63	20.87	10.21	4
	(mm)	6.0	239.8	14.5	15.0	9.0	328.0	270.0	530.0	4.63	
11416	10" X 283 X 460	0.24	9.44	0.57	0.59	0.354	11.81	11.14	18.11	11.02	4
	(mm)	6.0	239.8	14.5	15.0	9.0	300.0	283.0	460.0	5.00	
11437	12" X 210 X 640	0.24	11.22	0.57	0.59	0.315	12.01	8.27	25.20	14.28	4
	(mm)	6.0	285.0	14.5	15.0	8.0	305.0	210.0	640.0	6.48	
11424	12" X 215 X 500	0.24	11.22	0.57	0.59	0.354	11.22	8.47	19.69	9.38	4
	(mm)	6.0	285.0	14.5	15.0	9.0	285.0	215.0	500.0	4.25	
11422	12" X 235 X 530	0.24	11.22	0.57	0.59	0.354	12.48	9.25	20.87	9.59	4
	(mm)	6.0	285.0	14.5	15.0	9.0	317.0	235.0	530.0	4.35	
11427	12" X 238 X 550	0.24	11.22	0.57	0.59	0.354	12.17	9.37	21.65	10.74	4
	(mm)	6.0	285.0	14.5	15.0	9.0	309.0	238.0	550.0	4.87	
11419	12" X 243 X 515	0.24	11.22	0.57	0.59	0.315	12.21	9.57	20.28	10.76	4
	(mm)	6.0	285.0	14.5	15.0	8.0	310.0	243.0	515.0	4.88	
11432	12" X 250 X 565	0.24	11.22	0.57	0.59	0.354	12.60	9.84	22.24	11.05	4
	(mm)	6.0	285.0	14.5	15.0	9.0	320.0	250.0	565.0	5.01	
11433	12" X 260 X 580	0.24	11.22	0.57	0.59	0.315	12.87	10.24	22.84	13.83	4
	(mm)	6.0	285.0	14.5	15.0	8.0	327.0	260.0	580.0	6.27	
11434	12" X 262 X 600	0.24	11.22	0.57	0.59	0.354	13.39	10.32	23.62	13.25	4
	(mm)	6.0	285.0	14.5	15.0	9.0	340.0	262.0	600.0	6.01	
11438	12" X 270 X 655	0.24	11.22	0.57	0.59	0.315	13.98	10.63	25.79	18.56	4
	(mm)	6.0	285.0	14.5	15.0	8.0	355.0	270.0	655.0	8.42	
11439	12" X 275 X 560	0.24	11.22	0.57	0.59	0.354	13.78	10.83	22.05	12.20	4
	(mm)	6.0	285.0	14.5	15.0	9.0	350.0	275.0	560.0	5.53	

# TARAY INTERNATIONAL CORPORATION



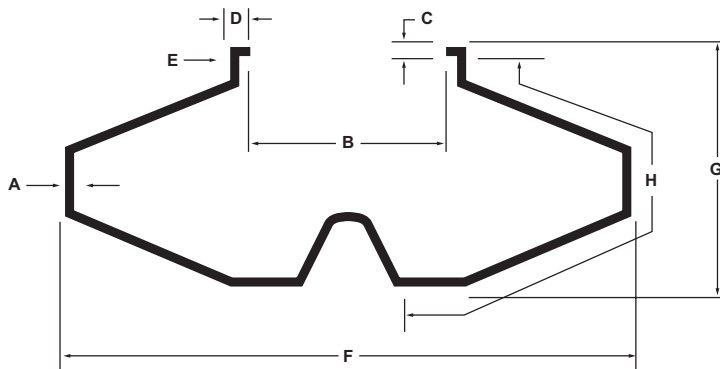
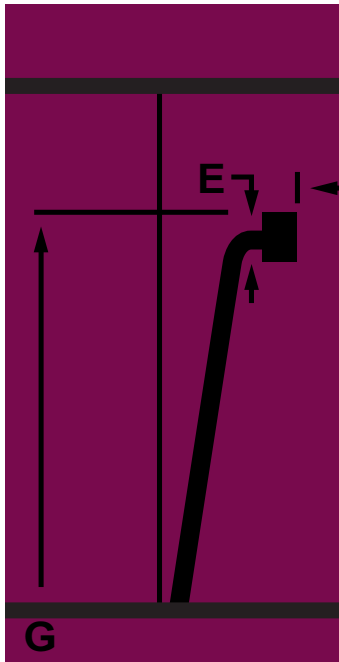
Bagwell Perform Radial Design Passenger / Light Truck

G

## SPECIAL ORDER ITEMS

Bladder Code	Reference Size (mm)	Crown Gauge A (mm)	Foot I.D. B (mm)	Foot Height C (mm)	Foot Width D (mm)	Neck Gauge E (mm)	Outside Diameter F (mm)	Overall Height G (mm)	Effective Periphery H (mm)	Wt. Lbs. (Kilos)	Etch Page 19
11436	12" X 288 X 620 (mm)	0.24 6.0	11.22 285.0	0.57 14.5	0.59 15.0	0.354 9.0	14.76 375.0	11.339 288.0	24.41 620.0	14.19 6.44	4
11435	12" X 292 X 600 (mm)	0.24 6.0	11.22 285.0	0.57 14.5	0.59 15.0	0.354 9.0	14.57 370.0	11.496 292.0	23.62 600.0	13.88 6.29	4
11440	12" X 355 X 565 (mm)	0.24 6.0	11.22 285.0	0.57 14.5	0.59 15.0	0.35 9.0	16.14 410.0	13.976 355.0	22.24 565.0	13.25 6.01	4
11441	12" X 400 X 565 (mm)	0.24 6.0	11.22 285.0	0.57 14.5	0.59 15.0	0.35 9.0	17.91 455.0	15.75 400.0	22.24 565.0	14.82 6.72	4
11443	14" X 250 X 520 (mm)	0.24 6.0	12.99 329.9	0.55 14.0	0.59 15.0	0.32 8.0	12.36 314.0	9.84 250.0	20.47 520.0	10.32 4.68	4
11445	14" X 270 X 530 (mm)	0.24 6.0	12.99 329.9	0.55 14.0	0.59 15.0	0.32 8.0	12.99 330.0	10.63 270.0	20.87 530.0	11.89 5.39	4
11447	14" X 290 X 575 (mm)	0.24 6.0	12.99 329.9	0.55 14.0	0.59 15.0	0.32 8.0	14.17 360.0	11.42 290.0	22.638 575.0	13.88 6.29	4
11449	14" X 300 X 550 (mm)	0.24 6.0	12.99 329.9	0.55 14.0	0.59 15.0	0.32 8.0	13.78 350.0	11.81 300.0	21.65 550.0	11.89 5.39	4
11451	14" X 340 X 590 (mm)	0.24 6.0	12.99 329.9	0.55 14.0	0.59 15.0	0.32 8.0	15.55 395.0	13.39 340.0	23.228 590.0	13.57 6.15	4

# TARAY INTERNATIONAL CORPORATION

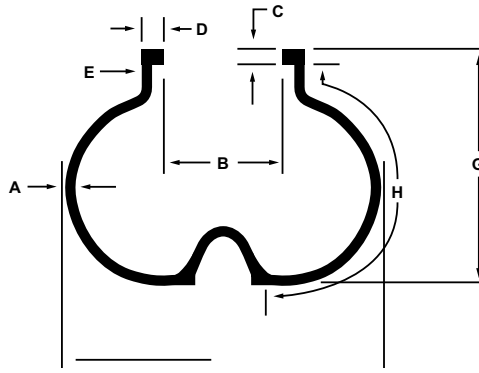
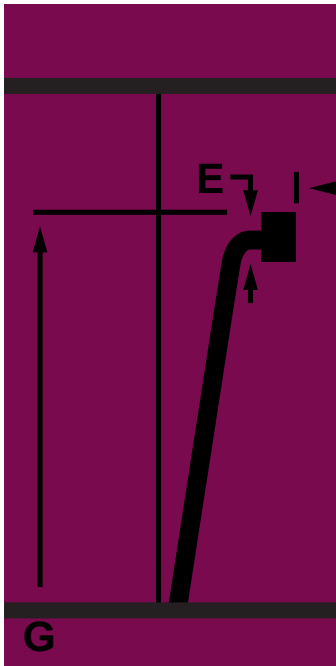


Light Truck

## SPECIAL ORDER ITEMS

Bladder Code	Reference Size (mm)	Crown Gauge A (mm)	Foot I.D. B (mm)	Foot Height C (mm)	Foot Width D (mm)	Neck Gauge E (mm)	Outside Diameter F (mm)	Overall Height G (mm)	Effective Periphery H (mm)	Wt. Lbs. (Kilos)	Etch Page 19
11410	10" X 200 X 535 (mm)	0.24 6.0	9.59 243.6	0.57 14.5	0.59 15.0	0.37 9.4	10.62 269.7	7.87 200.0	21.06 534.9	9.60 4.35	4
11407	10" X 240 X 480 (mm)	0.18 4.5	9.59 243.6	0.57 14.5	0.53 13.5	0.37 9.4	12.92 328.2	9.45 240.0	18.97 481.8	8.42 3.82	4
11423	12" X 215 X 500 (mm)	0.18 4.5	11.26 286.0	0.57 14.5	0.59 15.0	0.354 9.0	11.26 286.0	8.47 215.0	19.76 501.9	8.29 3.76	4
11417	12" X 230 X 470 (mm)	0.18 4.5	11.26 286.0	0.57 14.5	0.59 15.0	0.354 9.0	12.64 321.1	9.06 230.0	18.57 471.7	7.71 3.50	4
11420	12" X 235 X 530 (mm)	0.18 4.5	11.26 286.0	0.57 14.5	0.59 15.0	0.354 9.0	12.53 318.3	9.25 235.0	20.95 532.1	8.18 3.71	4
11421	12" X 235 X 530 (mm)	0.24 6.0	11.26 286.0	0.57 14.5	0.59 15.0	0.354 9.0	12.53 318.3	9.25 235.0	20.95 532.1	10.05 4.56	4
11418	12" X 243 X 515 (mm)	0.18 4.5	11.26 286.0	0.57 14.5	0.59 15.0	0.354 9.0	12.25 311.2	9.57 243.0	20.35 516.9	8.97 4.07	4
11426	12" X 243 X 515 (mm)	0.24 6.0	11.26 286.0	0.57 14.5	0.59 15.0	0.354 9.0	12.25 311.2	9.57 243.0	20.35 516.9	10.69 4.85	4
11430	12" X 250 X 565 (mm)	0.18 4.5	11.26 286.0	0.57 14.5	0.59 15.0	0.354 9.0	12.64 321.1	9.74 247.5	22.33 567.2	9.65 4.38	4
11431	12" X 250 X 565 (mm)	0.24 6.0	11.26 286.0	0.57 14.5	0.59 15.0	0.354 9.0	12.64 321.1	9.84 250.0	22.33 567.2	11.39 5.17	4
11428	12" X 275 X 560 (mm)	0.18 4.5	11.27 286.3	0.57 14.5	0.59 15.0	0.354 9.0	13.83 351.3	10.83 275.0	22.13 562.1	10.47 4.75	4
11429	12" X 275 X 560 (mm)	0.24 6.0	11.27 286.3	0.57 14.5	0.59 15.0	0.354 9.0	13.83 351.3	10.83 275.0	22.13 562.1	12.45 5.65	4
11425	12" X 288 X 510 (mm)	0.18 4.5	11.26 286.0	0.57 14.5	0.59 15.0	0.354 9.0	14.42 366.3	11.34 288.0	20.15 511.8	9.70 4.40	4
11452	12" X 288 X 510 (mm)	0.24 6.0	11.26 286.0	0.57 14.5	0.59 15.0	0.354 9.0	14.42 366.3	11.34 288.0	20.15 511.8	11.68 5.30	4
11442	14" X 250 X 520 (mm)	0.18 4.5	13.00 330.2	0.57 14.5	0.61 15.5	0.33 8.4	12.41 315.2	9.84 250.0	20.55 522.0	9.09 4.12	4
11444	14" X 250 X 530 (mm)	0.18 4.5	13.00 330.2	0.59 15.0	0.61 15.5	0.33 8.4	13.04 331.2	10.63 270.0	20.94 531.9	9.81 4.45	4
11446	14" X 290 X 575 (mm)	0.18 4.5	13.00 330.2	0.59 15.0	0.61 15.5	0.33 8.4	14.22 361.2	11.42 290.0	22.72 577.1	11.53 5.23	4
11448	14" X 300 X 550 (mm)	0.18 4.5	13.00 330.2	0.59 15.0	0.61 15.5	0.33 8.4	13.83 351.3	11.81 300.0	21.74 552.2	11.57 5.25	4
11450	14" X 340 X 590 (mm)	0.18 4.5	13.00 330.2	0.59 15.0	0.61 15.5	0.33 8.4	15.61 396.5	13.38 339.9	23.32 592.3	11.69 5.30	4

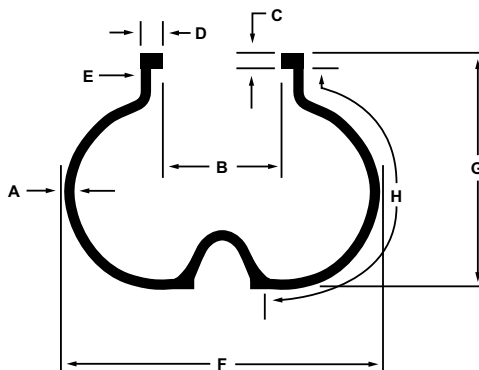
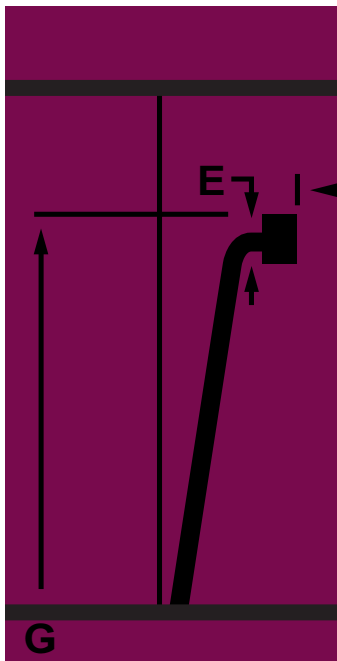
# TARAY INTERNATIONAL CORPORATION



## Bagwell Size Large Truck

Bladder Code	Reference Size (mm)	Crown Gauge A (mm)	Foot I.D. B (mm)	Foot Height C (mm)	Foot Width D (mm)	Neck Gauge E (mm)	Outside Diameter F (mm)	Overall Height G (mm)	Effective Periphery H (mm)	Wt. Lbs. (Kilos)	Etch Page 19
6808	20" small (mm)	0.40 10.2	15.99 406.1	0.54 13.7	0.78 19.8	0.4 10.2	26.00 660.4	20.00 508.0	26.35 669.3	31.90 14.47	4
6809	20" medium (mm)	0.40 10.2	15.99 406.1	0.54 13.7	0.78 19.8	0.4 10.2	26.00 660.4	23.00 584.2	29.35 745.5	35.80 16.24	4
6810	20" large (mm)	0.40 10.2	15.99 406.1	0.54 13.7	0.78 19.8	0.4 10.2	26.00 660.4	26.00 660.4	32.35 821.7	38.90 17.70	4
6811	20" X-large (mm)	0.40 10.2	15.99 406.1	0.54 13.7	0.78 19.8	0.40 10.2	26.00 660.4	29.00 736.6	35.35 897.9	41.00 18.64	4

# TARAY INTERNATIONAL CORPORATION



## Passenger Light Truck

Bladder Code	Reference Size (mm)	Crown Gauge A (mm)	Foot I.D. B (mm)	Foot Height C (mm)	Foot Width D (mm)	Neck Gauge E (mm)	Outside Diameter F (mm)	Overall Height G (mm)	Effective Periphery H (mm)	Wt. Lbs. (Kilos)	Etch Page 19
9094	13"/14"/15" (mm)	0.17 4.3	10.66 270.8	0.54 13.7	0.57 14.5	0.30 7.6	19.00 482.6	14.00 355.6	19.03 483.4	8.60 3.90	5
9091	13" (mm)	0.17 4.3	10.66 270.8	0.54 13.7	0.57 14.5	0.30 7.6	18.00 457.2	10.25 260.4	15.12 384.0	7.10 3.22	5
9092	13" (mm)	0.17 4.3	10.66 270.8	0.54 13.7	0.57 14.5	0.30 7.6	18.00 457.2	10.25 260.4	16.37 415.8	7.80 3.54	5
9093	13" (mm)	0.17 4.3	10.66 270.8	0.54 13.7	0.57 14.5	0.30 7.6	22.00 558.8	16.50 419.1	22.59 573.8	11.40 5.17	5
8912	14" large (mm)	0.17 4.3	10.66 270.8	0.54 13.7	0.57 14.5	0.25 6.4	20.25 514.4	12.86 326.6	18.13 460.5	9.25 4.20	5
8913	14" large (mm)	0.17 4.3	10.66 270.8	0.54 13.7	0.57 14.5	0.25 6.4	20.25 514.4	14.36 364.7	19.36 491.7	9.55 4.34	5
9090	14" / 15" (mm)	0.17 4.3	10.66 270.8	0.54 13.7	0.57 14.5	0.30 7.6	19.00 482.6	11.26 286.0	17.28 438.9	8.05 3.66	5
9089	14" / 15" (mm)	0.17 4.3	10.66 270.8	0.54 13.7	0.57 14.5	0.30 7.6	21.15 537.2	14.00 355.6	20.77 527.6	11.30 5.12	5
10070	14" - 15" (mm)	0.17 4.3	10.66 270.8	0.54 13.7	0.57 14.5	0.30 7.6	22.00 558.8	13.10 332.7	20.14 511.6	9.20 4.17	1
10068	14" - 15" (mm)	0.21 5.3	10.66 270.8	0.54 13.7	0.57 14.5	0.30 7.6	22.00 558.8	13.10 332.7	20.14 511.6	11.30 5.14	1
10071	15" (mm)	0.17 4.3	10.66 270.8	0.54 13.7	0.57 14.5	0.30 7.6	22.00 558.8	15.10 383.5	22.14 562.4	9.80 4.44	1
10069	15" (mm)	0.21 5.3	10.66 270.8	0.54 13.7	0.57 14.5	0.30 7.6	22.00 558.8	15.10 383.5	22.14 562.4	12.30 5.58	1



**TARAY**  
INTERNATIONAL  
C O R P O R A T I O N

<http://www.taray.com>

**TARAY INTERNATIONAL CORPORATION**

**1112 NORTH COLLIER BOULEVARD**

**MARCO ISLAND, FLORIDA 34145 USA**

**(800) 526-0049 TOLL FREE**