



TARAY
INTERNATIONAL

C O R P O R A T I O N

Heavy Duty Nail Hole Repair Extruder



**REPAIRS NAIL HOLES
IN TUBELESS TIRES**

"Our business is global... our service is personal."

1112 North Collier Boulevard, Marco Island, Florida 34145
Phone: (239) 394-6099 ● Toll Free: (800) 526-0049 ● Fax: (239) 394-5388
Website: <http://www.taray.com>
E-Mail: sales@taray.com

NAIL HOLE REPAIR EXTRUDER

SAFETY WARNING: BARREL OF REPAIR EXTRUDER GETS VERY HOT. HOLD REPAIR EXTRUDER BY HANDLE ONLY. FIRST DEGREE BURNS MAY RESULT IF BARREL TOUCHES THE SKIN.

SERVICE REQUIREMENTS

ELECTRICAL: 110V/20 AMP SERVICE IS NEEDED FOR HEATER BOX (220V UNITS ALSO AVAILABLE).
AIR: OPERATING PRESSURE FOR AIR MOTOR IS 100 PSI (6.5 BAR)
AIR MUST BE CLEAN AND LUBRICATED.

CAUTION: MAXIMUM PRESSURE TO AIR MOTOR IS 110 PSI, EXCEEDING THIS PRESSURE MAY DAMAGE AIR MOTOR AND VOID WARRANTIES.

NOTE: THE NAIL HOLE REPAIR EXTRUDER MUST HAVE A LUBRICATOR IN DIRECT AIR SUPPLY.

OPERATION

LET REPAIR EXTRUDER RUN FOR ONE MINUTE TWICE A DAY WITHOUT ANY ROPE RUBBER TO ASSURE MOTOR IS PROPERLY LUBRICATED.

PREPARATION:

1. LOOSEN NUT THAT HOLDS NOZZLE TO BARREL.
2. PULL NOZZLE AWAY FROM BARREL.
3. REMOVE ANY RUBBER PRESENT FROM BARREL AND NOZZLE.
4. REPLACE NOZZLE.

CAUTION: OPERATION WITH ANY DIRT OR CURED RUBBER IN BARREL MAY CAUSE REPAIR EXTRUDER TO BIND. IF EXTRUDER SLOWS DOWN OR BINDS, FOLLOW THIS PROCEDURE TO RETURN UNIT TO SERVICE.

1. REMOVE AIR COUPLER FITTING FROM BOTTOM OF AIR DRILL.
2. POUR LIGHT AIR TOOL OIL INTO AIR OPENING UNTIL DRILL IS FULL.
3. PULL TRIGGER TO ALLOW OIL TO ENTER AIR MOTOR.
4. REPEAT STEPS 2 AND 3.
5. REPLACE AIR COUPLER FITTING.
6. ATTACH LUBRICATED AIR SUPPLY TO EXTRUDER AND PRESS TRIGGER.

CAUTION: DO NOT DISASSEMBLE AIR MOTOR. DISASSEMBLY OF AIR MOTOR VOIDS SIX MONTH WARRANTY.

HEATING:

1. TURN HEATING BOX ON AND SET TEMPERATURE CONTROL AT TEMPERATURE RECOMMENDED BY YOUR ROPE RUBBER MANUFACTURER. CHOOSE LOWEST SETTING THAT WILL MAINTAIN EXTRUDABLE RUBBER.
2. ALLOW MINIMUM OF 15 MINUTES FOR REPAIR EXTRUDER TO WARM UP. GREEN LIGHT WILL SHUT OFF WHEN EXTRUDER REACHES DESIRED TEMPERATURE.
3. AFTER THREE MINUTES OF USE, EXTRUDER BARREL WILL COOL DOWN. RETURN TO HEATER BOX FOR RE-HEATING TO DESIRED TEMPERATURE.
4. PILOT LIGHT WILL SHUT OFF AGAIN WHEN EXTRUDER IS READY FOR USE.

CAUTION: CLEAN UNIT THOROUGHLY IF UNUSED FOR 20 MINUTES.

NAIL HOLE PREPARATION:

1. CLEAN AND BUFF NAIL HOLE USING RECOMMENDED HAND BUFFER.
2. MAKE SURE NAIL HOLE IS TAPERED ON INSIDE AND OUTSIDE OF TIRE.
3. DO NOT CEMENT NAIL HOLE.

FILLING THE NAIL HOLE:

1. FEED 12" (30CM) OF ROPE RUBBER INTO INTAKE HOLE ON BARREL.
2. PLACE NOZZLE IN THE NAIL HOLE ON INSIDE OF TIRE AND FILL.
3. ONLY 10" (25CM) OF ROPE RUBBER SHOULD HANG FROM INTAKE HOLE.
4. USE A KNIFE HANDLE TO TRIM AND FLATTEN EXTRUDED RUBBER.
5. INSTALL RUBBER PATCH OVER REPAIR ON INSIDE OF TIRE ACCORDING TO RUBBER PATCH MANUFACTURERS RECOMMENDATIONS.

CAUTION: IF ANOTHER NAIL HOLE IS NOT GOING TO BE REPAIRED IMMEDIATELY, EXTRUDE UNUSED PORTION OF RUBBER FROM BARREL.

CLEANING INSTRUCTIONS

IF REPAIR EXTRUDER IS TO BE LEFT UNUSED FOR MORE THAN 20 MINUTES

1. CUT OFF ROPE RUBBER GOING INTO INTAKE HOLE OF BARREL AND EXTRUDE REMAINING RUBBER OUT OF BARREL.
2. DISCONNECT AIR AND ELECTRICITY AND PLACE REPAIR EXTRUDER BACK INTO HEATER BOX FOR STORAGE.

DAILY:

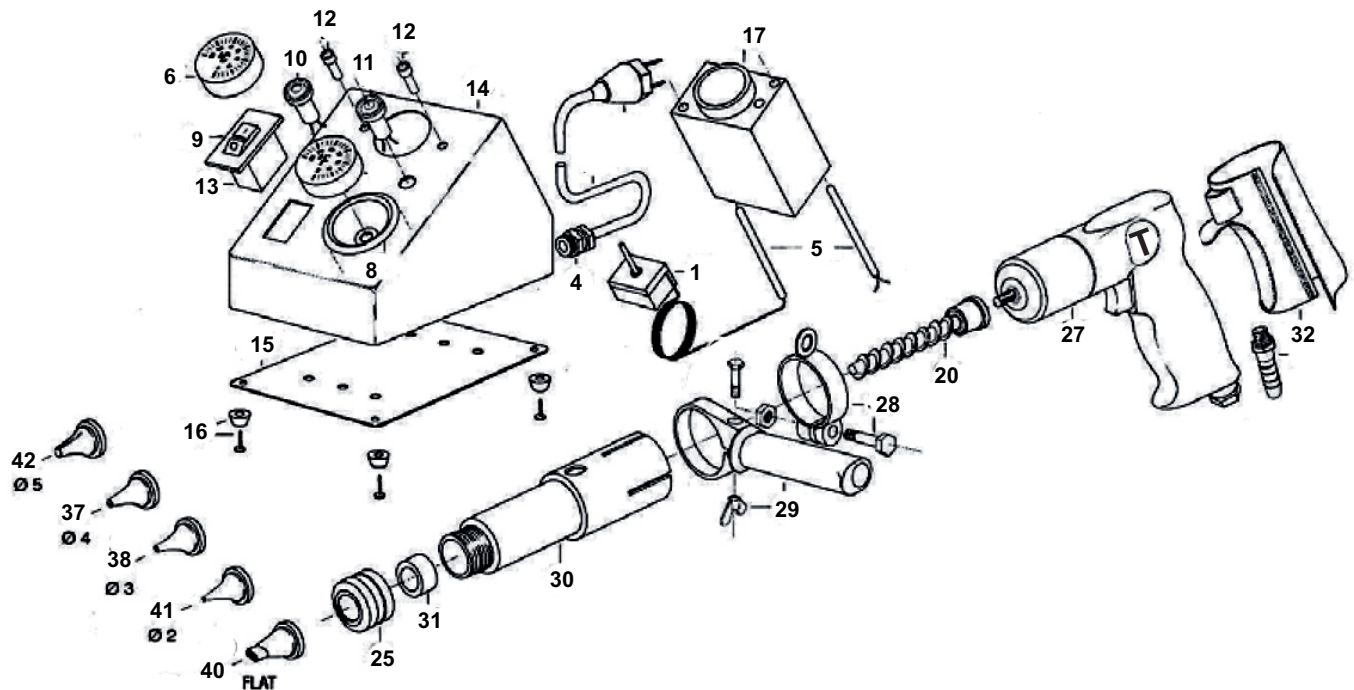
1. REMOVE NOZZLE AND EXTRUDE ANY REMAINING RUBBER FROM BARREL.
2. AFTER BARREL IS COMPLETELY COOLED, CLEAN NOZZLE IN ANY INDUSTRIAL STRENGTH SOLVENT TO REMOVE ALL RUBBER PARTICLES. USE TARAY/ADVANTAGE™ EXTRUDER CLEANER TO CLEAN BARREL.
3. CHECK AIR LUBRICATOR. IF NECESSARY, ADD LIGHT WEIGHT NON-DETERGENT OIL.

CAUTION: DO NOT INSERT AIR DRILL IN SOLVENT.

LIMITED WARRANTY

This warranty is made in lieu of any and all warranties, either expressed or implied. This Nail Hole Extruder is warranted to be free from defects in material or workmanship. Taray International Corporation will replace at no charge, based upon our sole analysis, any parts or units which upon inspection by our certified technician is found to contain defective workmanship or defective materials within six (6) months of the original purchase date. Taray International Corporation has made no affirmations of fact nor any promises relating to the Nail Hole Extruder being sold that has become the basis of our agreement. Furthermore, Taray International Corporation has made no affirmation of fact or promise relating to the Nail Hole Extruder being sold that has created or which amounts to an express warranty that the goods will conform to any other affirmation or promise contained outside this agreement. Any description of the Nail Hole Extruder contained in this agreement is for the sole purpose of identifying the Nail Hole Extruder and has not been made part of the bargain to purchase, nor has it created or amounted to any express warranty. Taray International Corporation makes no warranty of merchantability with respect to this Nail Hole Extruder being sold, other than to state that this product is manufactured for the use in filling nail holes on buffed tires. Since Taray International Corporation has no control over the conditions or circumstances under which this product is used, no liability for any incidental or consequential damages to any person or property which may result from the use of this Nail Hole Extruder will be assumed. Accordingly, there are no warranties, expressed or implied, which extend beyond the face of this Limited Warranty. "This Nail Hole Extruder is sold as is and with all faults other than expressly stated in this Limited Warranty".

Heavy Duty Nail Hole Extruder



Ref. No.	Part No.	Description
1	68515	THERMOSTAT
4	68525	CORD FITTING
5	68513	HEAT ELEMENT - 220V
5	68514	HEAT ELEMENT - 110V
6	68519	THERMOSTAT KNOB
8	67008	METAL RING
9	67009	METAL PLATE ADAPTER
10	68520R	PILOT LIGHT - GREEN
11	68520G	PILOT LIGHT - RED
12	67012	SCREW FOR HEATER BOX
13	67013	ON/OFF SWITCH
14	67014	BOX SHELL
15	67015	METAL PLATE / SCREEN
16	67016	RUBBER GROMMETS

Ref. No.	Part No.	Description
17	67017	HEATER BOX CORE
20	67020	EXTRUDER SCREW
25	67025	NOZZLE ADAPTER
27	67027	HEAVY DUTY DRILL
28	67028	HEAVY DUTY CLAMP W/ SCREW
29	67029	HEAVY DUTY HANDLE
30	67030	HEAVY DUTY CONTROL BODY
31	67031	HEAVY DUTY BUSHING
32	67032	GLOVE FOR HD EXTRUDER
37	67037	4MM SHAPED NOZZLE
38	67038	3MM SHAPED NOZZLE
40	67040	FLAT NOZZLE
41		2MM SHAPED NOZZLE
42		5MM SHAPED NOZZLE